

**prayag**<sup>®</sup>  
PIPES & FITTINGS



[www.prayagindia.com](http://www.prayagindia.com)

Quality Bemisaal  
*Likh ke le lo*



*Ajay Devgn*  
Ajay Devgn



Price list w.e.f. 15<sup>th</sup> Jan, 2023

# prayaag®

Winning millions  
of hearts since 1986



# CPVC

**DURALIFE**



## Why use Prayag CPVC Pipes?



Withstands elevated temperatures



Freedom from Toxicity, Odours, Tastes



Cost Effective



Easy to Install



Maintenance Free



Strong & Durable



UV Resistant



Fire Resistant



Good Chemical Resistance



Good Corrosion Resistance



Low bacterial growth



Solvent Cement Jointing



Allowing greater flexure



Food Grade Material



Highly ductile material



**P**rayag introduces a complete range of CPVC pipes and fitting for all plumbing applications. CPVC is fast replacing the conventional GI pipes because of its numerous advantages and improvement in the production technology, for hot and cold plumbing works. Technically Chlorinated Polyvinyl Chloride (CPVC) is PVC (Polyvinyl Chloride) that has been chlorinated via a free radical chlorination reaction. Various additives like stabilizers, impact modifiers, pigments and lubricants are also added into the resin in order to make the material processable and more durable for desired applications.

Prayag pipes have been developed with a Perfect-fit design to provide leak proof joints to avoid any leakages. Produced under strict quality control and conforming to international quality specifications, Prayag CPVC pipes are available from 15mm(1/2") to 100mm(4"), with two standard dimensional ratios of SDR 11 and SDR 13.5. Both SDR 11 and SDR 13.5 are produced from the similar compound having equivalent physical properties.

### Standards & Specifications

**ASTM D1784**-Standard Specification for Rigid Poly (Vinyl Chloride) (PVC) Compounds and Chlorinated Poly Vinyl Chloride (CPVC) Compounds.

**ASTM D2846**-Specification for Chlorinated Poly Vinyl Chloride (CPVC) Plastic Hot & Cold water distribution systems.

**ASTM F493**-Standard Specification for Solvent Cements for Chlorinated Poly Vinyl Chloride (CPVC) Plastic Pipe & Fittings.

**ASTM F441**-Standard Specification for Chlorinated Poly Vinyl Chloride (CPVC) Plastic Pipe, SCH 40 & 80.

### Fields of Application

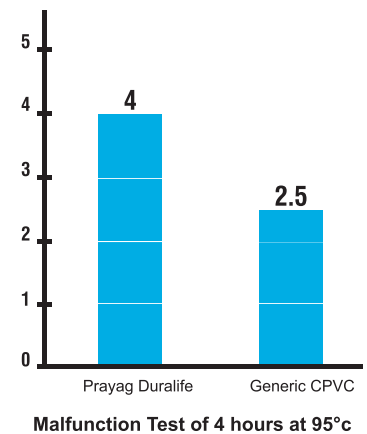
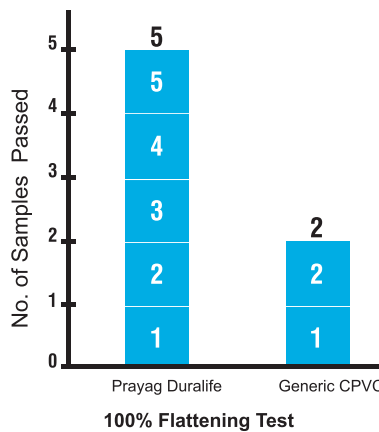
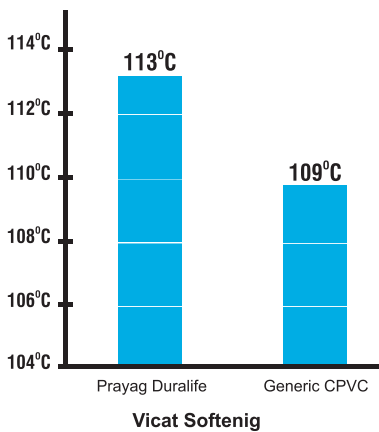
CPVC pipes and fittings find a vast variety of applications in residential and commercial high rise and low rise buildings, for both hot and cold water applications.

### Typical CPVC Testing Results

Parameters	Prayag Duralife	Generic CPVC Pipes processed from Pipes & Fittings	Prayag Duralife Advantages
Vicat Softening	Pass	Fail	Generic CPVC product has continuous problem in hot water lines
Vice Crush	Pass	Fail	Generic CPVC product material is inconsistent which weakens pipe and has high risk of pipe failure
Malfunction Failure at 95°C	Pass	Fail	Generic CPVC Product has less life expectancy
Vacat Softening	Pass	Fail	Higher Vicat Softening temperature makes Prayag CPVC pipes ideal for hot water application
Vice Crush	Pass	Fail	Prayag CPVC pipes have higher load bearing capacity hence are more stronger
Burst Test	Pass	Fail	Higher reading means Prayag CPVC pipes are stronger to to take higher water pressure

#### THE SUPERIOR HOT/ COLD WATER DISTRIBUTION SYSTEM

When you specify Duralife pipes and fittings, you benefit from the most experienced installation and support network in the industry. Let us help you, specify the pipes, fittings, solvent cements and -installation technologies that meet your most stringent standards for reliability and performance:



IS 15778 : 2007  
CML 8400023411



**Pipe SDR 11 (Mtr. Length)**

Size (in)	Packing Box	M.R.P Rs. Mtr SDR 11 (1mtr.)	Item Code	M.R.P Rs. MTR SDR11 (3mtr.)	Item Code	M.R.P Rs. MTR SDR11 (5mtr.)
1/2	100	<b>82.67</b>	PS-1	<b>248.00</b>	PS-1S	<b>413.33</b>
3/4	55	<b>129.33</b>	PS-2	<b>388.00</b>	PS-2S	<b>646.67</b>
1	30	<b>206.00</b>	PS-3	<b>618.00</b>	PS-3S	<b>1030.00</b>
1 1/4	20	<b>319.33</b>	PS-4	<b>958.00</b>	PS-4S	<b>1596.67</b>
1 1/2	15	<b>442.67</b>	PS-5	<b>1328.00</b>	PS-5S	<b>2213.33</b>
2	10	<b>756.00</b>	PS-6	<b>2268.00</b>	PS-6S	<b>3780.00</b>

**Pipe Sch 80 (Mtr. Length)**

Size (in)	Packing Box	M.R.P Rs. Mtr SDR 11 (1mtr.)	Item Code	M.R.P Rs. MTR SDR 11 (3mtr.)	Item Code	M.R.P Rs. MTR SDR11 (5mtr.)
2 1/2	5	<b>1493.33</b>	PS7	<b>4480.00</b>	PS 7S	<b>7466.67</b>
3	4	<b>1993.33</b>	PS8	<b>5980.00</b>	PS 8S	<b>9966.67</b>
4	2	<b>2893.33</b>	PS9	<b>8680.00</b>	PS 9S	<b>14466.67</b>
6	1	<b>6493.33</b>	PS10	<b>19480.00</b>	PS 10S	<b>32466.67</b>

IS 15778 : 2007  
CML 8400023411



**Pipe SDR 13.5 (Mtr. Length)**

Size (in)	Packing Box	M.R.P Rs. Mtr SDR 13.5 (1mtr.)	Item Code	M.R.P Rs. MTR SDR 13.5 (3mtr.)	Item Code	M.R.P Rs. MTR SDR13.5 (5mtr.)
1/2	100	<b>76.00</b>	PS-11	<b>228.00</b>	PS-11S	<b>380.00</b>
3/4	55	<b>112.67</b>	PS-12	<b>338.00</b>	PS-12S	<b>563.33</b>
1"	30	<b>174.67</b>	PS-13	<b>524.00</b>	PS-13S	<b>873.33</b>
1 1/4	20	<b>272.67</b>	PS-14	<b>818.00</b>	PS-14S	<b>1363.33</b>
1 1/2	15	<b>382.67</b>	PS-15	<b>1148.00</b>	PS-15S	<b>1913.33</b>
2	10	<b>646.00</b>	PS-16	<b>1938.00</b>	PS-16S	<b>3230.00</b>

**Pipe Sch 40 (Mtr. Length)**

Size (in)	Packing Box	M.R.P Rs. Mtr SDR 13.5 (1mtr.)	Item Code	M.R.P Rs. MTR SDR 13.5 (3mtr.)	Item Code	M.R.P Rs. MTR SDR13.5 (5mtr.)
2 1/2	5	<b>1060.00</b>	PS17	<b>3180.00</b>	PS17S	<b>5300.00</b>
3	4	<b>1496.67</b>	PS18	<b>4490.00</b>	PS18S	<b>7483.33</b>
4	2	<b>2226.67</b>	PS19	<b>6680.00</b>	PS19S	<b>11133.33</b>
6	1	<b>3944.67</b>	PS20	<b>11834.00</b>	PS20S	<b>19723.33</b>



**Elbow 90°**

Item Code	Size (mm)	Size (in)	Std. Pk (pcs)	Packing	M.R.P	M.R.P Per Box
C51	15	1/2	100	1000	<b>18.40</b>	<b>18400.00</b>
C52	20	3/4	100	800	<b>20.80</b>	<b>16640.00</b>
C53	25	1	50	400	<b>41.80</b>	<b>16720.00</b>
C54	32	1 1/4	10	200	<b>96.60</b>	<b>19320.00</b>
C55	40	1 1/2	10	120	<b>178.00</b>	<b>21360.00</b>
C56	50	2	05	50	<b>368.00</b>	<b>18400.00</b>

**Elbow 90° (Sch-80)**

C57	65	2 1/2	5	15	<b>990.00</b>	<b>14850.00</b>
C58	80	3	1	10	<b>1490.00</b>	<b>14900.00</b>
C59	100	4	1	5	<b>2484.00</b>	<b>12420.00</b>

**Elbow 90° (Sch-40) ▲**

C59N	150	6	1	2	<b>3980.00</b>	<b>7960.00</b>
------	-----	---	---	---	----------------	----------------



**Reducer Elbow**

Item Code	Size (mm)	Size (in)	Std. Pk (pcs)	Packing	M.R.P	M.R.P Per Box
C50	20 x 15	3/4 x 1/2	100	600	<b>33.80</b>	<b>20280.00</b>
C532	25 x 20	1 x 3/4	50	300	<b>84.60</b>	<b>25380.00</b>



**Elbow 45°**

Item Code	Size (mm)	Size (in)	Std. Pk (pcs)	Packing	M.R.P	M.R.P Per Box
C502	20	3/4	100	200	<b>29.80</b>	<b>5960.00</b>
C503	25	1	50	250	<b>52.20</b>	<b>13050.00</b>
C504	32	1 1/4	10	60	<b>116.00</b>	<b>6960.00</b>
C505	40	1 1/2	10	40	<b>176.00</b>	<b>7040.00</b>
C506	50	2	5	20	<b>368.00</b>	<b>7360.00</b>



**Tee**

Item Code	Size (mm)	Size (in)	Std. Pk (pcs)	Packing	M.R.P	M.R.P Per Box
C61	15	½	100	600	25.80	15480.00
C62	20	¾	50	500	34.60	17300.00
C63	25	1	25	300	54.90	16470.00
C64	32	1 ¼	10	150	119.60	17940.00
C65	40	1 ½	10	80	216.60	17328.00
C66	50	2	05	40	448.00	17920.00

**Tee Sch 80**

C67	65	2 ½	1	10	1484.00	14840.00
C68	80	3	1	6	2180.00	13080.00
C69	100	4	1	4	3490.00	13960.00

**Tee (Sch-40) ▲**

C69N	150	6	1	2	5980.00	11960.00
------	-----	---	---	---	---------	----------



**Reducer Tee**

Item Code	Size (mm)	Size (in)	Std.Pk (pcs)	Packing	M.R.P	M.R.P Per Box
C221	20 x 15 x 20	¾ x ½ x ¾	50	400	50.70	20280.00
C232	25 x 20 x 25	1 x ¾ x 1	25	150	99.60	14940.00
C242	32 x 20 x 32	1 ¼ x ¾ x 1 ¼	10	200	185.40	37080.00
C243	32 x 25 x 32	1 ¼ x 1 x 1 ¼	10	80	154.40	12352.00
C252	40 x 20 x 40	1 ½ x ¾	10	50	253.00	12650.00
C253	40 x 25 x 40	½ x 1 x 1 ½	10	30	250.60	7518.00
C254	40 x 32 x 40	1 ½ x 1 ¼	10	20	246.80	4936.00
C262	50 x 20 x 50	2 x ¾	5	20	484.80	9696.00
C263	50 x 25 x 50	2 x 1	5	20	466.90	9338.00
C264	50 x 32 x 50	2 x 1 ¼	5	20	507.70	10154.00
C265	50 x 40 x 50	2 x 1 ½	5	20	475.70	9514.00



**Union**

Item Code	Size (mm)	Size (in)	Std. Pk (pcs)	Packing	M.R.P	M.R.P Per Box
C32	20	¾	10	150	99.40	14910.00
C33	25	1	10	100	122.00	12200.00
C34	32	1 ¼	10	80	198.00	15840.00
C35	40	1 ½	10	50	328.00	16400.00
C36	50	2	05	30	588.00	17640.00
C37	65	2 ½	01	08	1270.00	10160.00
C38	80	3	01	06	1926.00	11556.00
C39	100	4	01	04	3280.00	13120.00



**Coupling**

Item Code	Size (mm)	Size (in)	Std. Pk (pcs)	Packing	M.R.P	M.R.P Per Box
C41	15	½	100	1200	16.10	19320.00
C42	20	¾	100	600	18.80	11280.00
C43	25	1	50	600	29.90	17940.00
C44	32	1 ¼	10	300	59.60	17880.00
C45	40	1 ½	10	200	109.00	21800.00
C46	50	2	10	50	238.40	11920.00

**Coupling Sch 80**

C47	65	2 ½	5	20	694.00	13880.00
C48	80	3	1	18	990.00	17820.00
C49	100	4	1	10	1494.00	14940.00

**Coupling (Sch-40) ▲**

C49N	150	6	1	2	2494.00	4988.00
------	-----	---	---	---	---------	---------



**Reducer Coupling**

Item Code	Size (mm)	Size (in)	Std. Pk (pcs)	Packing	M.R.P	M.R.P Per Box
C921	20 x 15	¾ x ½	100	800	<b>26.90</b>	<b>21520.00</b>
C932	25 x 20	1 x ¾	50	400	<b>40.80</b>	<b>16320.00</b>
C942	32 x 20	1 ¼ x ¾	25	250	<b>84.40</b>	<b>21100.00</b>
C943	32 x 25	1 ¼ x 1	50	200	<b>86.40</b>	<b>17280.00</b>
C952	40 x 20	1 ½ x ¾	25	150	<b>122.60</b>	<b>18390.00</b>
C953	40 x 25	1 ½ x 1	25	150	<b>125.50</b>	<b>18825.00</b>
C954	40 x 32	1 ½ x 1 ¼	25	125	<b>120.70</b>	<b>15087.50</b>
C962	50 x 20	2 x ¾	10	50	<b>258.00</b>	<b>12900.00</b>
C963	50 x 25	2 x 1	10	50	<b>257.00</b>	<b>12850.00</b>
C964	50 x 32	2 x 1 ¼	10	50	<b>267.00</b>	<b>13350.00</b>
C965	50 x 40	2 x 1 ½	10	50	<b>294.00</b>	<b>14700.00</b>



**Transition Bushing**

Item Code	Size (mm)	Size (in)	Std. Pk (pcs)	Packing	M.R.P	M.R.P Per Box
C702	20	¾	100	1000	<b>28.40</b>	<b>28400.00</b>
C703	25	1	50	300	<b>42.40</b>	<b>12720.00</b>
C703N	25	1	50	400	<b>29.90</b>	<b>11960.00</b>
C704	32	1 ¼	25	150	<b>49.40</b>	<b>7410.00</b>



**End Cap**

Item Code	Size (mm)	Size (in)	Std. Pk (pcs)	Packing	M.R.P	M.R.P Per Box
C601	15	½	100	1000	<b>11.60</b>	<b>11600.00</b>
C602	20	¾	100	500	<b>14.80</b>	<b>7400.00</b>
C603	25	1	100	200	<b>24.60</b>	<b>4920.00</b>
C604	32	1 ¼	10	100	<b>52.60</b>	<b>5260.00</b>
C605	40	1 ½	10	80	<b>76.30</b>	<b>6104.00</b>
C606	50	2	10	40	<b>158.00</b>	<b>6320.00</b>

**End Cap Sch 80**

C607	65	2 ½	5	50	<b>435.20</b>	<b>21760.00</b>
C608	80	3	5	30	<b>648.00</b>	<b>19440.00</b>
C609	100	4	1	15	<b>1098.00</b>	<b>16470.00</b>



**Reducer Bushing**

Item Code	Size (mm)	Size (in)	Std. Pk (pcs)	Packing	M.R.P	M.R.P Per Box
C832	25 x 20	1 x ¾	100	600	<b>21.20</b>	<b>12720.00</b>
C841	32 x 15	1 ¼ x ½	10	300	<b>57.30</b>	<b>17190.00</b>
C842	32 x 20	1 ¼ x ¾	10	300	<b>41.40</b>	<b>12420.00</b>
C843	32 x 25	1 ¼ x 1	10	300	<b>37.90</b>	<b>11370.00</b>
C851	40 x 15	1 ½ x ½	10	200	<b>86.20</b>	<b>17240.00</b>
C852	40 x 20	1 ½ x ¾	10	200	<b>65.30</b>	<b>13060.00</b>
C853	40 x 25	1 ½ x 1	10	200	<b>63.50</b>	<b>12700.00</b>
C854	40 x 32	1 ½ x 1 ¼	10	200	<b>47.60</b>	<b>9520.00</b>
C862	50 x 20	2 x ¾	10	100	<b>126.80</b>	<b>12680.00</b>
C863	50 x 25	2 x 1	10	100	<b>127.20</b>	<b>12720.00</b>
C864	50 x 32	2 x 1 ¼	10	100	<b>136.60</b>	<b>13660.00</b>
C865	50 x 40	2 x 1 ½	10	100	<b>113.50</b>	<b>11350.00</b>

**Reducer Bushing Sch 80**

C875	65 x 40	2 ½ x 1 ½	5	50	<b>390.50</b>	<b>19525.00</b>
C876	65 x 50	2 ½ x 2	5	50	<b>390.50</b>	<b>19525.00</b>
C886	80 x 50	3 x 2	1	15	<b>796.00</b>	<b>11940.00</b>
C887	80 x 64	3 x 2 ½			<b>566.00</b>	
C896	100 x 50	4 x 2	1	10	<b>1274.00</b>	<b>12740.00</b>
C897	100 x 80	4 x 3	1	10	<b>994.00</b>	<b>9940.00</b>
C898	100 x 65	4 x 2 ½			<b>1094.00</b>	



**Male Adapter (Plastic Threads)**

Item Code	Size (mm)	Size (in)	Std. Pk (pcs)	Packing	M.R.P	M.R.P Per Box
C101	20 x 15	¾ x ½	100	600	<b>34.00</b>	<b>20400.00</b>
C102	20	¾	100	600	<b>24.80</b>	<b>14880.00</b>
C103	25	1	50	300	<b>38.40</b>	<b>11520.00</b>
C104	32	1 ¼	10	150	<b>56.80</b>	<b>8520.00</b>
C105	40	1 ½	10	100	<b>96.40</b>	<b>9640.00</b>
C106	50	2	10	50	<b>179.00</b>	<b>8950.00</b>
C131	25 x 15	1 x ½	50	400	<b>59.90</b>	<b>23960.00</b>
C132	25 x 20	1 x ¾	50	400	<b>44.00</b>	<b>17600.00</b>

**Male Adapter (Plastic Threads) Sch 80**

C107	65	2 ½	5	30	<b>436.00</b>	<b>13080.00</b>
C108	80	3	1	24	<b>598.00</b>	<b>14352.00</b>
C109	100	4	1	13	<b>1136.00</b>	<b>14768.00</b>





**Female Adapter (Plastic Threads)**

Item Code	Size (mm)	Size (in)	Std. Pk (pcs)	Packing	M.R.P	M.R.P Per Box
C90	20 x 15	¾ x ½	50	500	<b>39.80</b>	<b>19900.00</b>
C91	25 x 20	1 x ¾	25	250	<b>54.60</b>	<b>13650.00</b>
C92	20	¾	50	400	<b>34.80</b>	<b>13920.00</b>
C93	25	1	25	200	<b>47.80</b>	<b>9560.00</b>
C94	32	1 ¼	10	120	<b>118.00</b>	<b>14160.00</b>
C95	40	1 ½	10	100	<b>168.00</b>	<b>16800.00</b>
C96	50	2	05	50	<b>268.20</b>	<b>13410.00</b>

**Female Adapter (Plastic Threads) Sch 80**

C97	65	2 ½	5	30	<b>424.00</b>	<b>12720.00</b>
C98	80	3	5	20	<b>684.00</b>	<b>13680.00</b>
C99	100	4	1	10	<b>1148.00</b>	<b>11480.00</b>



**Cross Tee**

Item Code	Size (mm)	Size (in)	Std. Pk (pcs)	Packing	M.R.P	M.R.P Per Box
C320	20	¾	50	200	<b>69.60</b>	<b>13920.00</b>
C330	25	1	25	100	<b>116.00</b>	<b>11600.00</b>



**Ball Valve**

Item Code	Size (mm)	Size (in)	Std. Pk (pcs)	Packing	M.R.P	M.R.P Per Box
C22	20	¾	1	75	<b>186.00</b>	<b>13950.00</b>
C23	25	1	1	44	<b>348.00</b>	<b>15312.00</b>
C24	32	1 ¼	1	26	<b>598.00</b>	<b>15548.00</b>
C25	40	1 ½	1	18	<b>896.00</b>	<b>16128.00</b>
C26	50	2	1	10	<b>1490.00</b>	<b>14900.00</b>



**Male Adapter (Brass Threads)**

Item Code	Size (mm)	Size (in)	Std. Pk (pcs)	Packing	M.R.P	M.R.P Per Box
C71	20 x 15	¾ x ½	25	150	<b>144.00</b>	<b>21600.00</b>
C72	20	¾	25	150	<b>228.00</b>	<b>34200.00</b>
C73	25	1	10	50	<b>348.00</b>	<b>17400.00</b>
C74	32	1 ¼	05	25	<b>758.00</b>	<b>18950.00</b>
C75	40	1 ½	05	25	<b>984.00</b>	<b>24600.00</b>
C76	50	2	05	15	<b>1794.00</b>	<b>26910.00</b>
C731	25 x 15	1 x ½	25	100	<b>248.00</b>	<b>24800.00</b>
C732	25 x 20	1 x ¾	25	100	<b>256.00</b>	<b>25600.00</b>



**Female Adapter (Brass Threads)**

Item Code	Size (mm)	Size (in)	Std. Pk (pcs)	Packing	M.R.P	M.R.P Per Box
C82	20	¾	25	150	<b>242.00</b>	<b>36300.00</b>
C83	25	1	10	50	<b>388.00</b>	<b>19400.00</b>
C84	32	1 ¼	05	25	<b>786.00</b>	<b>19650.00</b>
C85	40	1 ½	05	25	<b>894.00</b>	<b>22350.00</b>
C86	50	2	05	15	<b>1692.00</b>	<b>25380.00</b>



**Long Handle CPVC Ball Valve\***

Item Code	Size (mm)	Size (in)	Std. Pk (pcs)	Packing	M.R.P	M.R.P Per Box
C22L	20	¾	10	100	<b>178.00</b>	<b>17800.00</b>
C23L	25	1	10	70	<b>344.00</b>	<b>24080.00</b>
C24L	32	1 ¼	10	40	<b>532.00</b>	<b>21280.00</b>
C25L	40	1 ½	5	20	<b>948.00</b>	<b>18960.00</b>
C26L	50	2	5	15	<b>1690.70</b>	<b>25360.50</b>



**Tank Nipple**

Item Code	Size (mm)	Size (in)	Std. Pk (pcs)	Packing	M.R.P	M.R.P Per Box
C272	20	¾	10	80	<b>76.40</b>	<b>6112.00</b>
C273	25	1	10	50	<b>109.00</b>	<b>5450.00</b>
C274	32	1 ¼	10	40	<b>176.00</b>	<b>7040.00</b>
C275	40	1 ½	10	30	<b>258.00</b>	<b>7740.00</b>
C276	50	2	5	20	<b>399.00</b>	<b>7980.00</b>



**Tank Connector**

Item Code	Size (mm)	Size (in)	Std. Pk (pcs)	Packing	M.R.P	M.R.P Per Box
C272N	20	¾	10	80	<b>65.80</b>	<b>5264.00</b>
C273N	25	1	10	50	<b>99.00</b>	<b>4950.00</b>
C274N	32	1 ¼	10	40	<b>164.00</b>	<b>6560.00</b>
C275N	40	1 ½	10	30	<b>218.00</b>	<b>6540.00</b>
C276N	50	2	5	20	<b>382.00</b>	<b>7640.00</b>
C277N	65	2 ½	1	5	<b>1498.00</b>	<b>7490.00</b>
C278N	80	3	1	4	<b>1898.00</b>	<b>7592.00</b>
C279N	100	4	1	3	<b>3980.00</b>	<b>11940.00</b>



**Brass Elbow 90°**

Item Code	Size (mm)	Size (in)	Std. Pk (pcs)	Packing	M.R.P	M.R.P Per Box
C521	20 x 15	¾ x ½	50	150	<b>84.80</b>	<b>12720.00</b>
C523	25 x 15	1 x ½	25	100	<b>156.00</b>	<b>15600.00</b>
C524	25 x 20	1 x ¾	25	100	<b>248.00</b>	<b>24800.00</b>
C526	15 x 15	½ x ½	50	200	<b>81.60</b>	<b>16320.00</b>
C527	20 x 20	¾ x ¾	25	100	<b>119.80</b>	<b>11980.00</b>
C528	25 x 25	1 x 1	25	75	<b>477.00</b>	<b>35775.00</b>
C529	32	1 ¼	10	40	<b>594.00</b>	<b>23760.00</b>



**Reducer Tee (Brass)**

Item Code	Size (mm)	Size (in)	Std.Pk (pcs)	Packing	M.R.P	M.R.P Per Box
C321	15 x 15 x 15	½ x ½ x ½	50	200	<b>104.80</b>	<b>20960.00</b>
C322	20 x 15 x 20	¾ x ½ x ¾	25	100	<b>102.80</b>	<b>10280.00</b>
C323	25 x 15 x 25	1 x ½ x 1	25	75	<b>178.80</b>	<b>13410.00</b>
C333	20 x 20 x 20	¾ x ¾ x ¾	25	100	<b>148.80</b>	<b>14880.00</b>
C342	32 x 15 x 32	1 ¼ x ½ x 1 ¼	10	40	<b>318.00</b>	<b>12720.00</b>
C344	32 x 32 x 32	1 ¼ x 1 ¼ x 1 ¼	10	30	<b>348.00</b>	<b>10440.00</b>



**Reducer Brass Coupling**

Item Code	Size (mm)	Size (in)	Std. Pk (pcs)	Packing	M.R.P	M.R.P Per Box
C920	20 x 15	¾ x ½	50	200	<b>107.00</b>	<b>21400.00</b>
C930	25 x 15	1 x ½	25	150	<b>139.00</b>	<b>20850.00</b>
C940	25 x 20	1 x ¾	25	150	<b>148.80</b>	<b>22320.00</b>



**Expansion Loop\***

Item Code	Size (mm)	Size (in)	Std. Pk (pcs)	Packing	M.R.P	M.R.P Per Box
C230L	15	½	5	100	<b>74.00</b>	<b>7400.00</b>
C231L	20	¾	5	75	<b>132.00</b>	<b>9900.00</b>
C232L	25	1	2	40	<b>232.00</b>	<b>9280.00</b>
C233L	32	1 ¼	2	24	<b>434.00</b>	<b>10416.00</b>
C234L	40	1 ½	2	10	<b>668.00</b>	<b>6680.00</b>
C235L	50	2	1	6	<b>1372.00</b>	<b>8232.00</b>



**Brass Elbow 3 in 1 Mixer**

Item Code	Size (mm)	Size (in)	Std. Pk (pcs)	Packing	M.R.P	M.R.P Per Box
CM21	20 x 15	¾ x ½	1	15	448.00	6720.00
CM22	20 x 15	¾ x ½	1	15	448.00	6720.00
CM23	20 x 15	¾ x ½	1	15	448.00	6720.00
CM24	20 x 15	¾ x ½	1	15	448.00	6720.00
CM25	20 x 15	¾ x ½	1	15	448.00	6720.00

**Brass Elbow 3 in 1 Mixer**

Item Code	Size (mm)	Size (in)	Std. Pk (pcs)	Packing	M.R.P	M.R.P Per Box
CM31	25 x 15	1 x ½	1	15	548.00	8220.00
CM32	25 x 15	1 x ½	1	15	548.00	8220.00
CM33	25 x 15	1 x ½	1	15	548.00	8220.00
CM34	25 x 15	1 x ½	1	15	548.00	8220.00
CM35	25 x 15	1 x ½	1	15	548.00	8220.00



**Brass Elbow Kitchen Mixer**

Item Code	Size (mm)	Size (in)	Std. Pk (pcs)	Packing	M.R.P	M.R.P Per Box
CM26	20 x 15	¾ x ½	1	15	396.00	5940.00



**End Plug**

Item Code	Size (mm)	Size (in)	Std. Pk (pcs)	Packing	M.R.P	M.R.P Per Box
PP1	15	½	50	1000	8.80	8800.00
PP2	20	¾	50	500	10.60	5300.00



**Step Over Bend**

Item Code	Size (mm)	Size (in)	Std. Pk (pcs)	Packing	M.R.P	M.R.P Per Box
C12	20	¾	10	200	98.00	19600.00
C13	25	1	10	150	148.00	22200.00
C14	32	1 ¼	10	40	298.00	11920.00
C15	40	1 ½			384.00	



**Short Bend\***

Item Code	Size (mm)	Size (in)	Std. Pk (pcs)	Packing	M.R.P	M.R.P Per Box
C121	15	½	10	300	38.50	11550.00
C122	20	¾	50	300	52.70	15810.00
C123	25	1	25	150	91.70	13755.00
C124	32	1 ¼	25	100	147.00	14700.00
C125	40	1 ½	5	75	294.00	22050.00
C126	50	2	5	50	389.30	19465.00



**Ball Valve Handle**

Item Code	Size (mm)	Size (in)	Std. Pk (pcs)	Packing	M.R.P	M.R.P Per Box
CH22	20	¾	50	200	27.50	5500.00
CH23	25	1	50	200	39.00	7800.00
CH24	32	1 ¼	50	150	64.00	9600.00
CH25	40	1 ½	25	100	80.00	8000.00
CH26	50	2	25	100	122.50	12250.00



**Flange**

Item Code	Size (mm)	Size (in)	Std. Pk (pcs)	Packing	M.R.P	M.R.P Per Box
CF-12	65	2 ½	1	10	1431.00	14310.00
CF-13	80	3	1	12	1705.70	20468.40
CF-14	100	4	1	06	2780.20	16681.20



**Pipe Clamp**

Item Code	Size (mm)	Size (in)	Std. Pk (pcs)	Packing	M.R.P	M.R.P Per Box
PC1	15	½	200	1,600	4.40	7040.00
PC2	20	¾	200	1,000	4.90	4900.00
PC3	25	1	250	1,500	5.90	8850.00



**Pipe Clamp ( Heavy Saddle With Powder Coating )**

Item Code	Size (mm)	Size (in)	Std. Pk (pcs)	Packing	M.R.P	M.R.P Per Box
PC-21	15	½	90	2400	10.90	26160.00
PC-22	20	¾	60	2000	12.90	25800.00
PC-23	25	1	50	2000	14.90	29800.00
PC-24	32	1 ¼	40	2000	17.60	35200.00
PC-25	40	1 ½	30	1600	19.40	31040.00
PC-26	50	2	25	800	24.80	19840.00



**Pipe Clamp (Zinc Plated)**

Item Code	Size (mm)	Size (in)	Std. Pk (pcs)	Packing	M.R.P	M.R.P Per Box
PC-31	15	½	150	3200	15.30	48960.00
PC-32	20	¾	180	2400	15.30	36720.00
PC-33	25	1	150	2400	18.70	44880.00
PC-34	32	1 ¼	100	2000	20.00	40000.00
PC-35	40	1 ½	80	1600	26.10	41760.00
PC-36	50	2	50	800	32.60	26080.00

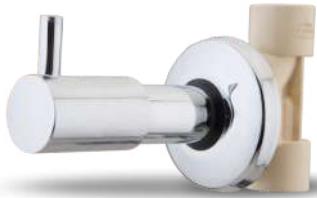
**Single Lever Concealed Diverter**

Item Code		M.R.P
SL-01	Body	2600.00
SL-02	Upper Part	1600.00



**Solvent**

Item Code	Size in (ml)	M.R.P	Inner Box	Master Carton
S1	20 Tube	64.00	100 Tubes	600 Tubes
S2	50 Tube	116.00	50 Tubes	300 Tubes
S3	59 ML/Tin	144.00	50 Tins	240 Tins
S4	04 OZ/118 Tins	224.00	24 Tins	144 Tins
S5	08 OZ/237 Tins	360.00	24 Tins	96 Tins
S6	16 OZ/473 Tins	670.00	12 Tins	48 Tins
S7	32 OZ/ 946 Tins	1236.00	6 Tins	24 Tins



**Long Concealed Valve (Quarter Turn)\***

Item Code	Size (in)	Knob	Std. Pk (pcs)	Packing Box	M.R.P	M.R.P Per Box
CH80	3/4	VIVA	1	32	980.00	31360.00
CH79	3/4	SAGA	1	32	980.00	31360.00
CH78	3/4	URBONA	1	32	1036.00	33152.00
CH76	3/4	MACASA	1	32	1036.00	33152.00
CH74	3/4	GRACIA	1	32	1068.00	34176.00
CH72	3/4	TRIANGULER	1	32	980.00	31360.00



**Short Concealed Valve (Quarter Turn)\***

Item Code	Size (in)	Knob	Std. Pk (pcs)	Packing Box	M.R.P	M.R.P Per Box
CH80-S	3/4	VIVA	1	32	970.00	31040.00
CH79-S	3/4	SAGA	1	32	970.00	31040.00
CH78-S	3/4	URBONA	1	32	970.00	31040.00
CH76-S	3/4	MACASA	1	32	970.00	31040.00
CH74-S	3/4	GRACIA	1	32	960.00	30720.00
CH72-S	3/4	TRIANGULER	1	32	960.00	30720.00

**Full Turn Concealed Valve (3/4")\***

Item Code	Size (in)	Knob	Std. Pk (pcs)	Packing Box	M.R.P	M.R.P Per Box
CH80F	3/4	VIVA	1	32	980.00	31360.00
CH79F	3/4	SAGA	1	32	980.00	31360.00
CH78F	3/4	URBONA	1	32	980.00	31360.00
CH76F	3/4	MACASA	1	32	980.00	31360.00
CH74F	3/4	GRACIA	1	32	980.00	31360.00
CH72F	3/4	TRIANGULER	1	32	980.00	31360.00

Also Available Knob



Also Available Knob



# UPVC

## AQUAFRESH



### Why use Prayag UPVC Pipes?



Lead Free



Freedom from  
Toxicity, Odours, Tastes



Cost Effective



Maintenance Free



Strong & Durable



UV Resistant



Good Chemical  
Resistance



Good Corrosion  
Resistance



Low Thermal Conductivity



Easy to Install



Fire Resistant



Solvent Cement  
Jointing

Prayag presents a complete range of high quality UPVC (Unplasticized Polyvinyl Chloride) pipes and fittings. UPVC pipes find a wide range of domestic and commercial applications including electrical & telephone cabling, sewer pipes and above all drinking water supply. Made at one of the most modern plant in Bhiwadi, Rajasthan, these pipes are made with precise accuracy using the best of polymer. Having almost double the pressure bearing capacity than the conventional threaded pipes and UV resistance, these pipes are manufactured with lead free material and last for almost a lifetime. The perfect fit technology used to manufacture these pipes, provide leak-proof joints with minimum maintenance and cost.

Feature	Advantage
<b>Safe</b>	Made with non-toxic lead free raw material, Prayag UPVC pipes are absolutely safe for drinking water
<b>Perfect fit</b>	Dimensional precision of Prayag UPVC pipes leads to a perfect fitting that avoids any chance of leakage
<b>More Strength</b>	An additional bearing capacity and higher UV & impact resistance means Prayag UPVC pipes have more strength to last longer
<b>Ease of installation</b>	Prayag UPVC pipes are very easy to install and maintain, that makes handling and installation easy
<b>Hygienic</b>	Prayag UPVC pipes are corrosion resistant, odourless and chemically inert
<b>Economical</b>	Prayag UPVC pipes work out to be much more economical as compared to metal pipes
<b>Environment Friendly</b>	Prayag UPVC pipes and fittings use lead free material

## Applications

Due to its high material quality and dimensional precision, Prayag's "Lead Free" UPVC Aquafresh Solvent weld plumbing system is a choice of leading Engineers and Architects. Prayag UPVC Aquafresh pipes and fittings are available from size 15 mm (½") to 110 mm (4") in Sch 40 and Sch 80.



Cold Water Plumbing in buildings



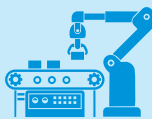
Water Distribution Mains



Swimming Pools



Dye Plant, Chrome, Zinc Plating and Tanning Plants



Industrial Process Lines



Salt water line



Aggressive/corrosive fluid transportation



Sugar, paper and distillery industries

Prayag Aquafresh systems do not support combustion and are therefore ideally suited for use in buildings and houses, exclusively for cold water pipelines. UPVC must be forced to burn due to its High Limiting Oxygen Index (LOI) of 45. LOI is the percentage of oxygen needed in an atmosphere to support combustion.



# UPVC LEAD FREE Advantage

Lead contamination due to PVC pipes is one of the major contributing factors of ground water pollution in India

Lead poisoning has various long-term negative health effects. It is important to identify the sources of such pollution and to devise methods to eliminate the contributing factors.

#### **Sources of lead contamination of potable water supplies & groundwater**

- PVC pipes used in sanitation, plumbing & agriculture
- Manufacturing of PVC pipes & products
- Manufacturing of PVC fittings and attachments
- Recycled plastic PVC

As a result of the stringent quality control measures that have been adopted by Prayag ever since inception, our entire range of UPVC pipes are lead free, durable, safe and long lasting. These Lead free PVC pipes are used in sanitation, plumbing and agriculture

Prayag where safety is designed first the - product later. Lasting durabilities by Prayag are synonymous with quality.





**Pipe Sch 80 (Mtr. Length)**

Size (in)	Packing Box	M.R.P RS MTR SCH 80 (1 mtr.)	Item Code	M.R.P RS MTR SCH 80 (3 mtr.)	Item Code	M.R.P RS MTR SCH 80 (6 mtr.)
1/2	30	94.67	PU-1	284.00	PU-1 S	568.00
3/4	25	124.67	PU-2	374.00	PU-2 S	748.00
1	20	186.00	PU-3	558.00	PU-3 S	1116.00
1 1/4	15	247.33	PU-4	742.00	PU-4 S	1484.00
1 1/2	10	298.00	PU-5	894.00	PU-5 S	1788.00
2	8	411.33	PU-6	1234.00	PU-6 S	2468.00



**Pipe SCH 40 ( Mtr. Length )**

Size (in)	Packing Box	M.R.P RS MTR SCH 40 (1mtr.)	Item Code	M.R.P RS MTR SCH 40 (3mtr.)	Item Code	M.R.P RS MTR SCH 40 (6mtr.)
1/2	30	72.67	PU-11	218.00	PU-11S	436.00
3/4	25	98.00	PU-12	294.00	PU-12S	588.00
1	20	139.33	PU-13	418.00	PU-13S	836.00
1 1/4	15	192.67	PU-14	578.00	PU-14S	1156.00
1 1/2	10	232.00	PU-15	696.00	PU-15S	1392.00
2	8	308.00	PU-16	924.00	PU-16S	1848.00

**Pipe Sch 80 (Mtr. Length)**

Size (in)	Packing Box	M.R.P RS MTR SCH 80 (1 mtr.)	Item Code	M.R.P RS MTR SCH 80 (3 mtr.)	Item Code	M.R.P RS MTR SCH 80 (6 mtr.)
2 1/2	5	631.33	PU 7	1894.00	PU 7S	3788.00
3	4	812.67	PU 8	2438.00	PU 8S	4876.00
4	2	1166.00	PU 9	3498.00	PU 9S	6996.00
6	1	2019.67	PU10	6059.00	PU10	12118.00

**Pipe Sch 40 (Mtr. Length)**

Size (in)	Packing Box	M.R.P RS MTR SCH 40 (1 mtr.)	Item Code	M.R.P RS MTR SCH 40 (3 mtr.)	Item Code	M.R.P RS MTR SCH 40 (6 mtr.)
2 1/2	5	482.00	PU17	1446.00	PU17S	2892.00
3	4	589.33	PU18	1768.00	PU18S	3536.00
4	2	899.33	PU19	2698.00	PU19S	5396.00
6	1	1566.00	PU20	4698.00	PU20S	9396.00



**Pipe SCH 80 (Mtr. Length-Threaded End )**

Size (in)	Packing Box	Item Code	M.R.P RS MTR SCH 80 (3 mtr.)	Item Code	M.R.P RS MTR SCH 80 (6 mtr.)
1/2	30	PU-1 T	288.00	PU-1 TS	576.00
3/4	25	PU-2 T	380.00	PU-2 TS	760.00
1	20	PU-3 T	564.00	PU-3 TS	1128.00
1 1/4	15	PU-4 T	750.00	PU-4 TS	1500.00
1 1/2	10	PU-5 T	912.00	PU-5 TS	1824.00
2	8	PU-6 T	1250.00	PU-6 TS	2500.00



**Elbow 90° ( SCH 80 )**

Item Code	Size (mm)	Size (in)	Std. Pk (pcs)	Packing	M.R.P.	M.R.P Per Box
U50	20 x 15	3/4 x 1/2	50	250	21.90	5475.00
U51	15	1/2	50	300	15.20	4560.00
U52	20	3/4	50	400	21.40	8560.00
U53	25	1	25	250	37.40	9350.00
U54	32	1 1/4	10	150	57.60	8640.00
U55	40	1 1/2	10	100	74.80	7480.00
U56	50	2	5	50	112.00	5600.00
U57	65	2 1/2	5	15	254.00	3810.00
U58	80	3	1	10	414.00	4140.00
U59	100	4	1	5	664.00	3320.00

**Elbow 90°(Sch-40)**

Item Code	Size (mm)	Size (in)	Std. Pk (pcs)	Packing	M.R.P.	M.R.P Per Box
U59N	150	6	1	2	1130.50	2261.00



**Reducer Elbow 90° ( SCH 80 )**

Item Code	Size (mm)	Size (in)	Std. Pk (pcs)	Packing	M.R.P.	M.R.P Per Box
U531	25 x 15	1 x ½	25	150	31.80	4770.00
U532	25 x 20	1 x ¾	25	150	34.40	5160.00
U533	32 x 15	1 ¼ x ½	5	25	42.40	1060.00
U534	32 x 20	1 ¼ x ¾	5	25	44.90	1112.50
U535	32 x 25	1 ¼ x 1	10	80	58.00	4640.00
U536	40 x 15	1 ½ x ½	10	80	64.00	5120.00
U537	40 x 20	1 ½ x ¾	10	80	62.00	4960.00
U538	40 x 25	1 ½ x 1	10	60	72.00	4320.00
U539	40 x 32	1 ½ x 1 ¼	10	50	88.00	4400.00



**Reducer Brass Elbow ( SCH 80 )**

Item Code	Size (mm)	Size (in)	Std. Pk (pcs)	Packing	M.R.P.	M.R.P Per Box
U521	20 x 15	¾ x ½	25	100	82.00	8200.00
U523	25 x 15	1 x ½	25	75	98.00	7350.00
U524	25 x 20	1 x ¾	25	75	148.00	11100.00
U526	15 x 15	½ x ½	50	150	68.00	10200.00
U527	20 x 20	¾ x ¾	25	100	118.00	11800.00



**Elbow 45° ( Sch 80 )**

Item Code	Size (mm)	Size (in)	Std. Pk (pcs)	Packing	M.R.P.	M.R.P Per Box
U502	20	¾	50	250	21.40	5350.00
U503	25	1	25	150	33.80	5070.00
U504	32	1 ¼	10	100	54.40	5440.00
U505	40	1 ½	10	60	72.80	4368.00
U506	50	2	5	30	106.00	3180.00



**Tee ( SCH 80 )**

Item Code	Size (mm)	Size (in)	Std. Pk (pcs)	Packing	M.R.P.	M.R.P Per Box
U61	15	½	50	400	21.40	8560.00
U62	20	¾	50	300	29.80	8940.00
U63	25	1	25	150	49.80	7470.00
U64	32	1 ¼	10	80	76.00	6080.00
U65	40	1 ½	10	50	99.80	4990.00
U66	50	2	5	40	154.00	6160.00

**Tee ( SCH 80 )**

Item Code	Size (mm)	Size (in)	Std. Pk (pcs)	Packing	M.R.P.	M.R.P Per Box
U67	65	2 ½	1	10	338.00	3380.00
U68	80	3	1	6	548.00	3288.00
U69	100	4	1	4	888.00	3552.00

**Tee (Sch-40)**

Item Code	Size (mm)	Size (in)	Std. Pk (pcs)	Packing	M.R.P.	M.R.P Per Box
U69N	150	6	1	2	1248.00	2496.00



**Reducer Tee ( SCH 80 )**

Item Code	Size (mm)	Size (in)	Std. Pk (pcs)	Packing	M.R.P.	M.R.P Per Box
U221	20 x 15 x 20	¾ x ½ x ¾	25	300	28.80	8640.00
U231	25 x 15 x 25	1 x ½ x 1	25	100	43.80	4380.00
U241	32 x 15 x 32	1 ¼ x ½	10	50	74.40	3720.00
U242	32 x 20 x 32	1 ¼ x ¾	10	50	74.40	3720.00
U243	32 x 25 x 32	1 ¼ x 1	10	50	78.00	3900.00
U232	25 x 20 x 25	1 x ¾	25	75	46.00	3450.00
U251	40 x 15 x 40	1 ½ x ½ x 1 ½	10	40	89.40	3576.00
U252	40 x 20 x 40	1 ½ x ¾	10	50	94.00	4700.00
U253	40 x 25 x 40	1 ½ x 1 x 1 ½	10	40	96.00	3840.00
U254	40 x 32 x 40	1 ½ x 1 ¼	10	30	118.00	3540.00
U261	50 x 15 x 50	2 x ½ x 2	5	50	138.00	6900.00
U262	50 x 20 x 50	2 x ¾	5	40	198.00	7920.00
U263	50 x 25 x 50	2 x 1	5	40	208.00	8320.00
U264	50 x 32 x 50	2 x 1 ¼	5	40	196.00	7840.00
U265	50 x 40 x 50	2 x 1 ½ x 2	5	40	152.00	6080.00



**Union ( SCH 80 )**

Item Code	Size (mm)	Size (in)	Std. Pk (pcs)	Packing	M.R.P.	M.R.P Per Box
U31	15	½	10	200	32.80	6560.00
U32	20	¾	10	120	44.20	5304.00
U33	25	1	10	80	61.80	4944.00
U34	32	1 ¼	10	60	94.80	5688.00
U35	40	1 ½	10	30	164.00	4920.00
U36	50	2	5	20	284.00	5680.00
U37	65	2 ½	1	8	498.00	3984.00
U38	80	3	1	6	768.00	4608.00
U39	100	4	1	4	1340.00	5360.00



**Reducer Bushing ( SCH 80 )**

Item Code	Size (mm)	Size (in)	Std. Pk (pcs)	Packing	M.R.P.	M.R.P Per Box
U821	20 x 15	¾ x ½	100	800	5.90	4720.00
U831	25 x 15	1 x ½	100	500	13.90	6950.00
U832	25 x 20	1 x ¾	50	400	24.00	9600.00
U841	32 x 15	1 ¼ x ½	10	250	25.80	6450.00
U842	32 x 20	1 ¼ x ¾	10	250	22.90	5725.00
U843	32 x 25	1 ¼ x 1	10	250	14.80	3700.00
U851	40 x 15	1 ½ x ½	10	200	34.20	6840.00
U852	40 x 20	1 ½ x ¾	10	200	30.60	6120.00
U853	40 x 25	1 ½ x 1	10	200	30.60	6120.00
U854	40 x 30	1 ½ x 1 ¼	10	200	40.60	8120.00
U861	50 x 15	2 x ½	10	100	60.20	6020.00
U862	50 x 20	2 x ¾	10	100	54.30	5430.00
U863	50 x 25	2 x 1	10	100	61.90	6190.00
U864	50 x 32	2 x 1 ¼	10	100	54.30	5430.00
U865	50 x 40	2 x 1 ½	10	100	52.00	5200.00

**Reducer Bushing ( SCH 80 )**

U875	65 x 40	2 ½ x 1 ½	5	50	88.00	4400.00
U876	65 x 50	2 ½ x 2	5	50	62.00	3100.00
U886	80 x 50	3 x 2	1	15	154.00	2310.00
U887	50 x 65	3 x 2 ½	5	30	126.00	3780.00
U896	100 x 50	4 x 2	1	10	248.00	2480.00
U897	100 x 80	4 x 3	1	10	216.00	2160.00
U898	100 x 65	4 x 2 ½	1	10	278.00	2780.00



**Reducer Coupling ( SCH 80 )**

Item Code	Size (mm)	Size (in)	Std. Pk (pcs)	Packing	M.R.P.	M.R.P Per Box
U921	20 x 15	¾ x ½	50	300	15.50	4650.00
U931	25 x 15	1 x ½	25	200	23.80	4760.00
U932	25 x 20	1 x ¾	25	200	25.20	5040.00
U941	32 x 15	1 ¼ x ½	10	120	31.20	3744.00
U942	32 x 20	1 ¼ x ¾	10	120	32.00	3840.00
U943	32 x 25	1 ¼ x 1	10	120	35.70	4284.00
U951	40 x 15	1 ½ x ½	10	100	80.60	8060.00
U952	40 x 20	1 ½ x ¾	10	100	42.60	4260.00
U953	40 x 25	1 ½ x 1	10	80	47.00	3760.00
U954	40 x 32	1 ½ x 1 ¼	10	80	63.00	5040.00
U961	50 x 15	2 x ½	10	50	123.60	6180.00
U962	50 x 20	2 x ¾	10	50	122.60	6130.00
U963	50 x 25	2 x 1	10	50	124.80	6240.00
U964	50 x 32	2 x 1 ¼	10	50	121.10	6055.00
U965	50 x 40	2 x 1 ½	10	50	111.90	5595.00



**Coupling (SCH 80)**

Item Code	Size (mm)	Size (in)	Std. Pk (pcs)	Packing	M.R.P.	M.R.P Per Box
U41	15	½	50	500	11.50	5750.00
U42	20	¾	50	600	17.00	10200.00
U43	25	1	25	300	27.00	8100.00
U44	32	1 ¼	10	200	39.30	7860.00
U45	40	1 ½	10	150	49.50	7425.00
U46	50	2	10	50	74.40	3720.00

**Coupling (SCH 80)**

U47	65	2 ½	5	25	168.00	4200.00
U48	80	3	1	18	228.00	4104.00
U49	100	4	1	10	362.00	3620.00

**Coupling (SCH-40) ▲**

U49N	150	6	1	8	534.00	4272.00
------	-----	---	---	---	--------	---------



End Cap ( SCH 80 )

Item Code	Size (mm)	Size (in)	Std.Pk (pcs)	Packing	M.R.P.	M.R.P Per Box
U601	15	½	100	400	<b>6.90</b>	<b>2760.00</b>
U602	20	¾	100	300	<b>9.60</b>	<b>2880.00</b>
U603	25	1	50	300	<b>15.80</b>	<b>4740.00</b>
U604	32	1 ¼	10	80	<b>25.40</b>	<b>2032.00</b>
U605	40	1 ½	10	60	<b>32.60</b>	<b>1956.00</b>
U606	50	2	10	40	<b>49.80</b>	<b>1992.00</b>

End Cap ( SCH 80 )

U607	65	2 ½	5	50	<b>99.40</b>	<b>4970.00</b>
U608	80	3	5	30	<b>148.00</b>	<b>4440.00</b>
U609	100	4	1	15	<b>248.00</b>	<b>3720.00</b>



Male Adapter (Plastic Threads) Sch 80

Item Code	Size (mm)	Size (in)	Std.Pk (pcs)	Packing	M.R.P.	M.R.P Per Box
U101	15	½	100	800	<b>8.20</b>	<b>6560.00</b>
U102	20	¾	50	400	<b>11.90</b>	<b>4760.00</b>
U103	25	1	50	400	<b>22.20</b>	<b>8880.00</b>
U104	32	1 ¼	10	120	<b>31.80</b>	<b>3816.00</b>
U105	40	1 ½	10	80	<b>39.40</b>	<b>3152.00</b>
U106	50	2	10	60	<b>59.40</b>	<b>3564.00</b>

Male Adapter (Plastic Threads) Sch 80

U107	65	2 ½	5	30	<b>109.00</b>	<b>3270.00</b>
U108	80	3	1	24	<b>154.00</b>	<b>3696.00</b>
U109	100	4	1	13	<b>298.00</b>	<b>3874.00</b>



Female Adaptor (Plastic Thread) SCH 80

Item Code	Size (mm)	Size (in)	Std.Pk (pcs)	Packing	M.R.P.	M.R.P Per Box
U89	20x15	¾ x ½	50	300	<b>17.20</b>	<b>5160.00</b>
U90	25x15	1 x ½	25	300	<b>32.20</b>	<b>9660.00</b>
U91	15	½	100	600	<b>10.60</b>	<b>6360.00</b>
U92	20	¾	50	600	<b>15.80</b>	<b>9480.00</b>
U93	25	1	25	300	<b>25.90</b>	<b>7770.00</b>
U94	32	1 ¼	10	120	<b>35.60</b>	<b>4272.00</b>
U95	40	1 ½	10	80	<b>48.40</b>	<b>3872.00</b>
U96	50	2	10	60	<b>67.40</b>	<b>4044.00</b>

Female Adaptor (Plastic Thread) SCH 80

U97	65	2 ½	5	30	<b>106.80</b>	<b>3204.00</b>
U98	80	3	5	20	<b>178.00</b>	<b>3560.00</b>
U99	100	4	1	10	<b>299.20</b>	<b>2992.00</b>



Male Adapter (Brass Threads) Sch 80

Item Code	Size (mm)	Size (in)	Std.Pk (pcs)	Packing	M.R.P.	M.R.P Per Box
U70	20 x 15	¾ x ½	25	150	<b>98.00</b>	<b>14700.00</b>
U71	15	½	50	150	<b>108.00</b>	<b>16200.00</b>
U72	20	¾	25	100	<b>154.00</b>	<b>15400.00</b>
U73	25	1	25	50	<b>238.00</b>	<b>11900.00</b>
U74	32	1 ¼	10	40	<b>388.00</b>	<b>15520.00</b>
U75	40	1 ½	10	30	<b>488.00</b>	<b>14640.00</b>
U76	50	2	5	20	<b>696.00</b>	<b>13920.00</b>
U731	25 x 15	1 x ½	25	100	<b>106.00</b>	<b>10600.00</b>



Female Adaptor (Brass Thread) SCH 80

Item Code	Size (mm)	Size (in)	Std. Pk (pcs)	Packing	M.R.P.	M.R.P Per Box
U81	15	½	50	200	58.00	11600.00
U82	20	¾	25	150	108.00	16200.00
U83	25	1	25	75	176.00	13200.00
U84	32	1 ¼	10	40	294.00	11760.00
U85	40	1 ½	10	30	468.00	14040.00
U86	50	2	5	20	644.00	12880.00
U920	20x15	¾ x ½	25	150	68.00	10200.00
U930	25x15	1 x ½	25	100	74.00	7400.00



Cross Tee (Sch 80)

Item Code	Size (mm)	Size (in)	Std. Pk (pcs)	Packing	M.R.P.	M.R.P Per Box
U310	15	½	50	150	27.20	4080.00
U320	20	¾	25	100	35.40	3540.00
U330	25	1	25	50	59.80	4485.00
U340	32	1 ¼	10	30	96.80	2904.00



Ball Valve (SCH 80)

Item Code	Size (mm)	Size (in)	Std. Pk (pcs)	Packing	M.R.P.	M.R.P Per Box
U21	15	½	1	108	86.00	9288.00
U22	20	¾	1	68	134.00	9112.00
U23	25	1	1	40	248.00	9920.00
U24	32	1 ¼	1	28	324.00	9072.00
U25	40	1 ½	1	16	488.00	7808.00
U26	50	2	1	10	724.00	7240.00



Ball Valve Threaded (SCH 80)

Item Code	Size (mm)	Size (in)	Std. Pk (pcs)	Packing	M.R.P.	M.R.P Per Box
U21 T	15	½	1	108	92.00	9936.00
U22 T	20	¾	1	68	140.00	9520.00
U23 T	25	1	1	40	258.00	10320.00
U24 T	32	1 ¼	1	28	334.00	9352.00
U25 T	40	1 ½	1	16	514.00	8224.00
U26 T	50	2	1	10	748.00	7480.00



Ball Valve Long Lever Handle (SCH 80)

Item Code	Size (mm)	Size (in)	Std. Pk (pcs)	Packing	M.R.P.	M.R.P Per Box
U21 L	15	½	10	100	86.00	8600.00
U22 L	20	¾	10	80	134.00	10720.00
U23 L	25	1	10	50	248.00	12400.00
U24 L	32	1 ¼	10	30	324.00	9720.00
U25 L	40	1 ½	5	20	488.00	9760.00
U26 L	50	2	5	15	724.00	10860.00



Ball Valve (SCH 80)

Item Code	Size (mm)	Size (in)	Std. Pk (pcs)	Packing	M.R.P.	M.R.P Per Box
U22 N	20	¾	1	68	158.00	10744.00
U23 N	25	1	1	40	274.00	10960.00
U24 N	32	1 ¼	1	28	356.00	9968.00
U25 N	40	1 ½	1	16	536.00	8576.00
U26 N	50	2	1	10	798.00	7980.00



**Ball Valve ( Long Lever Handle ) SCH 80**

Item Code	Size (mm)	Size (in)	Std.Pk (pcs)	Packing	M.R.P.	M.R.P Per Box
U22 NL	20	¾	10	80	<b>158.00</b>	<b>12640.00</b>
U23 NL	25	1	10	50	<b>274.00</b>	<b>13700.00</b>
U24 NL	32	1 ¼	10	30	<b>356.00</b>	<b>10680.00</b>
U25 NL	40	1 ½	5	20	<b>536.00</b>	<b>10720.00</b>
U26 NL	50	2	5	15	<b>798.00</b>	<b>11970.00</b>



**Tank Nipple ( Sch 80 )**

Item Code	Size (mm)	Size (in)	Std.Pk (pcs)	Packing	M.R.P.	M.R.P Per Box
U272	20	¾	10	80	<b>46.00</b>	<b>3680.00</b>
U273	25	1	10	50	<b>52.00</b>	<b>2600.00</b>
U274	32	1 ¼	10	40	<b>68.00</b>	<b>2720.00</b>
U275	40	1 ½	10	30	<b>82.00</b>	<b>2460.00</b>
U276	50	2	5	20	<b>124.00</b>	<b>2480.00</b>



**Tank Connector ( Sch 80 )**

Item Code	Size (mm)	Size (in)	Std.Pk (pcs)	Packing	M.R.P.	M.R.P Per Box
U272N	20	¾	10	80	<b>46.00</b>	<b>3680.00</b>
U273N	25	1	10	50	<b>52.00</b>	<b>2600.00</b>
U274N	32	1 ¼	10	30	<b>74.00</b>	<b>2220.00</b>
U275N	40	1 ½	10	20	<b>98.00</b>	<b>2940.00</b>
U276N	50	2	5	15	<b>138.00</b>	<b>2070.00</b>
U277N	65	2 ½	1	10	<b>414.00</b>	<b>4140.00</b>
U278N	80	3	1	6	<b>698.00</b>	<b>4188.00</b>
U279N	100	4	1	3	<b>1198.00</b>	<b>3594.00</b>



**Reducer Brass Tee ( SCH 80 )**

Item Code	Size (mm)	Size (in)	Std.Pk (pcs)	Packing	M.R.P.	M.R.P Per Box
U321	15 x 15 x 15	½ x ½ x ½	25	100	<b>78.00</b>	<b>7800.00</b>
U322	20 x 15 x 20	¾ x ½ x ¾	25	75	<b>94.00</b>	<b>7050.00</b>
U323	25 x 15 x 25	1 x ½ x 1	25	100	<b>118.00</b>	<b>11800.00</b>
U324	25 x 20 x 25	1 x ¾	25	50	<b>174.00</b>	<b>8700.00</b>



**Step Over Bend ( Sch 80 )**

Item Code	Size (mm)	Size (in)	Std.Pk (pcs)	Packing	M.R.P.	M.R.P Per Box
U11	15	½	10	150	<b>34.00</b>	<b>5100.00</b>
U12	20	¾	10	150	<b>58.00</b>	<b>8700.00</b>
U13	25	1	10	40	<b>114.00</b>	<b>4560.00</b>
U14	32	1 ¼	10	30	<b>148.00</b>	<b>4440.00</b>
U15	40	1 ½	5	20	<b>258.00</b>	<b>5160.00</b>



**Flange**

Item Code	Size (mm)	Size (in)	Std.Pk (pcs)	Packing	M.R.P.	M.R.P Per Box
UF12	65	2 ½	1	12	<b>228.00</b>	<b>2736.00</b>
UF13	80	3	1	10	<b>378.00</b>	<b>3780.00</b>
UF14	100	4	1	8	<b>668.00</b>	<b>5344.00</b>



**Pipe Clamp ( SCH 80 )**

Item Code	Size (mm)	Size (in)	Std.Pk (pcs)	Packing	M.R.P.	M.R.P Per Box
UC-21	15	½	50	700	<b>12.40</b>	<b>8680.00</b>
UC-22	20	¾	50	400	<b>17.90</b>	<b>7160.00</b>
UC-23	25	1	25	250	<b>33.50</b>	<b>8375.00</b>



**Short Bend ( Sch 80 )**

Item Code	Size (mm)	Size (in)	Std.Pk (pcs)	Packing	M.R.P.	M.R.P Per Box
U121	15	½	50	300	<b>32.90</b>	<b>9870.00</b>
U122	20	¾	25	150	<b>43.60</b>	<b>6540.00</b>
U123	25	1	25	100	<b>76.80</b>	<b>7680.00</b>
U124	32	1 ¼	5	70	<b>125.50</b>	<b>8785.00</b>
U125	40	1 ½	5	50	<b>158.70</b>	<b>7935.00</b>
U126	50	2	5	30	<b>243.10</b>	<b>7293.00</b>



**Pipe Clamp**

(Heavy Saddle with powder coating) SCH 80

Item Code	Size (mm)	Size (in)	Std.Pk (pcs)	Packing	M.R.P.	M.R.P Per Box
UC-1	15	½	80	1600	<b>19.70</b>	<b>31520.00</b>
UC-2	20	¾	50	1600	<b>22.70</b>	<b>36320.00</b>
UC-3	25	1	40	1200	<b>25.30</b>	<b>30360.00</b>
UC-4	32	1 ¼	30	1200	<b>30.30</b>	<b>36360.00</b>
UC-5	40	1 ½	25	1200	<b>34.40</b>	<b>41280.00</b>
UC-6	50	2	20	600	<b>66.30</b>	<b>39780.00</b>



**Pipe Clamp ( SCH 80 )**

(Heavy saddle without powder coating) Zinc Plated

Item Code	Size (mm)	Size (in)	Std.Pk (pcs)	Packing	M.R.P.	M.R.P Per Box
UC-11	15	½	180	2800	<b>13.80</b>	<b>38640.00</b>
UC-12	20	¾	150	2400	<b>15.40</b>	<b>36960.00</b>
UC-13	25	1	100	2000	<b>17.90</b>	<b>35800.00</b>
UC-14	32	1 ¼	90	1600	<b>21.90</b>	<b>35040.00</b>
UC-15	40	1 ½	70	1600	<b>24.40</b>	<b>39040.00</b>
UC-16	50	2	50	800	<b>46.90</b>	<b>37520.00</b>



**Solvent Aqua Clear**

Item Code	Tube Size in (ml)	M.R.P	Inner Box	Master Cartun
S11	20 Tubes	<b>44.00</b>	100 TUBES	600 Tube
S12	50 Tubes	<b>88.00</b>	50 Tubes	300 Tubes
S13	59 Tube	<b>126.00</b>	50 Tube	240 Tins
S14	04 Oz/118 Tins	<b>168.00</b>	24 Tins	144 Tins
S15	08 Oz/237 Tins	<b>280.00</b>	24 Tins	96 Tins
S16	16 Oz/437 Tins	<b>540.00</b>	12 Tins	48 Tins
S17	32 Oz/946 Tins	<b>980.00</b>	6 Tins	24 Tins



**Solvent HD Clear**

Item Code	Tube Size in (ml)	M.R.P	Inner Box	Master Cartun
S21	20 Tube	<b>52.00</b>	100 Tube	600 Tube
S22	50 Tubes	<b>108.00</b>	50 Tubes	300 Tubes
S23	59 Tube	<b>158.00</b>	50 Tube	300 Tube
S24	04 Oz/118 Tins	<b>228.00</b>	24 Tins	144 Tins
S25	08 Oz/237 Tins	<b>348.00</b>	24 Tins	96 Tins
S26	16 Oz/437 Tins	<b>680.00</b>	12 Tins	48 Tins
S27	32 Oz/946 Tins	<b>1180.00</b>	6 Tins	24 Tins



Long Concealed Valve (Quarter Turn)

Item Code	Size (in)	Knob	ST. PK (PCS)	Packing Box	M.R.P.	M.R.P Per Box
UH90	½	VIVA	1	32	681.00	21792.00
UH89	½	SPA	1	32	686.00	21952.00
UH88	½	URBONA	1	32	695.00	22240.00
UH86	½	MACASA	1	32	695.00	22240.00
UH84	½	GRACIA	1	32	704.00	22528.00
UH82	½	TRIANGULER	1	32	686.00	21952.00



Long Concealed Valve (Quarter Turn)

Item Code	Size (in)	Knob	ST. PK (PCS)	Packing Box	M.R.P.	M.R.P Per Box
UH80	¾	VIVA	1	32	681.00	21792.00
UH79	¾	SPA	1	32	686.00	21952.00
UH78	¾	URBONA	1	32	695.00	22240.00
UH76	¾	MACASA	1	32	695.00	22240.00
UH74	¾	GRACIA	1	32	704.00	22528.00
UH72	¾	TRIANGULER	1	32	686.00	21952.00



Short Concealed Valve (Quarter Turn)

Item Code	Size (in)	Knob	ST. PK (PCS)	Packing Box	M.R.P.	M.R.P Per Box
UH90-S	½	VIVA	1	32	653.00	20896.00
UH89-S	½	SPA	1	32	661.00	21152.00
UH88-S	½	URBONA	1	32	670.00	21440.00
UH86-S	½	MACASA	1	32	670.00	21440.00
UH84-S	½	GRACIA	1	32	676.00	21632.00
UH82-S	½	TRIANGULER	1	32	661.00	21152.00



Short Concealed Valve (Quarter Turn)

Item Code	Size (in)	Knob	ST. PK (PCS)	Packing Box	M.R.P.	M.R.P Per Box
UH80-S	¾	VIVA	1	32	653.00	20896.00
UH79-S	¾	SPA	1	32	661.00	21152.00
UH78-S	¾	URBONA	1	32	670.00	21440.00
UH76-S	¾	MACASA	1	32	670.00	21440.00
UH74-S	¾	GRACIA	1	32	676.00	21632.00
UH72-S	¾	TRIANGULER	1	32	661.00	21152.00

Also Available Knob



Also Available Knob







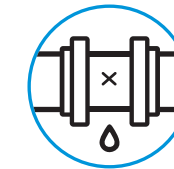
# खेत खुशहाल मजबूती बेमिसाल



Prayag brings you another quality product from its piping solutions, Prayag Agritech pressure pipes. Manufactured in accordance with IS 4985 standards at one of the most modern plant at Bhiwadi, Rajasthan, these pipes go through stringent quality checks, conforming to peak performance standards, before they are rolled out of the factory. Prayag produces a complete range of agricultural pipes from 50mm to 160mm, so as to suit various application requirements. They are available in neutral light grey colour with pressure ratings of 2.5, 4, 6, 10 kg/cm<sup>2</sup> as defined by IS standards.

**Prayag Agritech Features & Benefits**

- Top quality raw material for better build quality
- Easy handling, transportation and installation
- Non-conductive
- Longer life
- Ease of use
- Better and smooth flow for optimum yield
- High Strength and durability



100% Leak Proof Joints



Economical & Cost Effective



Low Weight, Easy Handling



Strong & Durable



UV Resistant



Excellent Corrosion Resistance



High Chemical Resistance

**Applications - Water supply, Drip irrigation and Sprinkler lines**

	MM	20	25	32	40	50	63	75	90			110	125	140	160	180	200	225	250	280	315	355	400		
<b>3 meters</b> Agriculture Pipes Working Pressure	2.5 kg	-	-	-	-	-	-	-	480.00			710.00	895.00	1120.00	1480.00	1870.00	2320.00	-	-	-	-	-	-	-	
	4 kg	-	-	-	-	-	450.00	648.00	843.00			1099.00	1675.00	2170.00	2493.00	2990.00	3640.00	-	-	-	-	-	-	-	
	6 kg	-	-	-	259.00	390.00	558.00	839.00	1119.00			1624.00	2248.00	2948.00	3248.00	4290.00	5368.00	-	-	-	-	-	-	-	-
	10 kg	89.00	137.00	223.00	336.00	495.00	848.00	1198.00	1716.00			2568.00	3316.00	4148.00	5388.00	6844.00	8469.00	-	-	-	-	-	-	-	
<b>5 meters</b> Agriculture Pipes Working Pressure	2.5 kg	-	-	-	-	-	-	-	800.00			1183.00	1492.00	1867.00	2467.00	3117.00	3867.00	-	-	-	-	-	-	-	
	4 kg	-	-	-	-	-	749.00	1080.00	1405.00			1832.00	2791.00	3617.00	4155.00	4983.00	6067.00	-	-	-	-	-	-	-	
	6 kg	-	-	-	432.00	650.00	930.00	1398.00	1865.00			2707.00	3747.00	4913.00	5413.00	7150.00	8947.00	-	-	-	-	-	-	-	
	10 kg	148.00	228.00	372.00	560.00	825.00	1413.00	1997.00	2860.00			4280.00	5527.00	6913.00	8980.00	11407.00	14115.00	-	-	-	-	-	-	-	
<b>6 meters</b> Agriculture Pipes Working Pressure	2.5 kg	-	-	-	-	-	-	-	960.00			1420.00	1790.00	2240.00	2960.00	3740.00	4640.00	-	-	-	-	-	-	-	
	4 kg	-	-	-	-	-	899.00	1296.00	1686.00			2198.00	3349.00	4340.00	4986.00	5980.00	7280.00	-	-	-	-	-	-	-	
	6 kg	-	-	-	518.00	780.00	1116.00	1678.00	2238.00			3248.00	4496.00	5896.00	6496.00	8580.00	10736.00	-	-	-	-	-	-	-	
	10 kg	178.00	274.00	446.00	672.00	990.00	1696.00	2396.00	3432.00			5136.00	6632.00	8296.00	10776.00	13688.00	16938.00	-	-	-	-	-	-	-	

## Fittings for Agriculture ( 4 kg )



**COUPLER**

Cat No.	Size (mm)	Std Pkg.	M.R.P.
A-246	63	120	<b>37.40</b>
A-247	75	125	<b>54.80</b>
A-248	90	75	<b>79.80</b>
A-249	110	50	<b>123.00</b>
A-242	160	14	<b>296.00</b>
A-243	200	75	<b>518.80</b>



**EQUAL TEE**

Cat No.	Size (mm)	Std Pkg.	M.R.P.
A-346	63	75	<b>91.50</b>
A-347	75	45	<b>136.00</b>
A-348	90	32	<b>200.50</b>
A-349	110	15	<b>318.00</b>
A-342	160	5	<b>796.70</b>
A-343	200	2	<b>1534.10</b>



**ELBOW**

Cat No.	Size (mm)	Std Pkg.	M.R.P.
A-446	63	120	<b>66.00</b>
A-447	75	70	<b>98.00</b>
A-448	90	45	<b>146.00</b>
A-449	110	25	<b>238.00</b>
A-442	160	8	<b>660.00</b>
A-443	200	4	<b>1033.10</b>



**END CAP**

Cat No.	Size (mm)	Std Pkg.	M.R.P.
A-546	63	200	<b>28.20</b>
A-547	75	225	<b>39.90</b>
A-548	90	140	<b>56.90</b>
A-549	110	75	<b>88.40</b>
A-542	160	25	<b>218.00</b>
A-543	200	8	<b>454.40</b>

## Fittings for Agriculture ( 6 kg )



**COUPLER**

Cat No.	Size (mm)	Std Pkg.	M.R.P.
A-264	40	400	<b>17.10</b>
A-265	50	200	<b>28.50</b>
A-266	63	110	<b>46.00</b>
A-267	75	120	<b>66.40</b>
A-268	90	75	<b>97.20</b>
A-269	110	50	<b>150.80</b>
A-270	125	32	<b>202.40</b>
A-271	140	22	<b>278.00</b>
A-272	160	12	<b>388.00</b>



**EQUAL TEE**

Cat No.	Size (mm)	Std Pkg.	M.R.P.
A-364	40	150	<b>39.90</b>
A-365	50	150	<b>64.00</b>
A-366	63	40	<b>102.00</b>
A-367	75	45	<b>155.00</b>
A-368	90	25	<b>236.00</b>
A-369	110	15	<b>366.20</b>
A-370	125	12	<b>496.00</b>
A-371	140	6	<b>678.00</b>
A-372	160	6	<b>936.50</b>



**ELBOW**

Cat No.	Size (mm)	Std Pkg.	M.R.P.
A-464	40	250	<b>31.10</b>
A-465	50	200	<b>49.80</b>
A-466	63	60	<b>77.60</b>
A-467	75	70	<b>118.00</b>
A-468	90	40	<b>177.10</b>
A-469	110	24	<b>269.50</b>
A-470	125	15	<b>402.90</b>
A-471	140	10	<b>530.80</b>
A-472	160	8	<b>794.00</b>



**END CAP**

Cat No.	Size (mm)	Std Pkg.	M.R.P.
A-564	40	700	<b>12.80</b>
A-565	50	400	<b>20.30</b>
A-566	63	200	<b>32.40</b>
A-567	75	200	<b>45.80</b>
A-568	90	120	<b>71.20</b>
A-569	110	75	<b>110.20</b>
A-570	125	60	<b>144.00</b>
A-571	140	30	<b>192.00</b>
A-572	160	10	<b>274.10</b>

## Fittings for Agriculture ( 6 kg )



### REDUCER TEE

Cat No.	Size (mm)	Std Pkg.	M.R.P.
A-661	75 x 50	60	119.00
A-662	75 x 63	50	139.00
A-663	90 x 63	36	182.10
A-664	90 x 75	30	197.20
A-665	110 x 63	26	257.00
A-666	110 x 75	24	283.30
A-667	110 x 90	18	316.40
A-668	140 x 75	8	462.70
A-669	140 x 90	8	498.00
A-670	160 x 75	6	612.00
A-671	160 x 90	6	732.00
A-672	160 x 110	6	718.00



### REDUCER COUPLER

Cat No.	Size (mm)	Std Pkg.	M.R.P.
A-761	75 x 50	150	50.90
A-762	75 x 63	150	56.50
A-763	90 x 50	100	73.40
A-764	90 x 63	100	76.90
A-765	90 x 75	100	84.80
A-766	110 x 63	75	115.90
A-767	110 x 75	75	112.30
A-768	110 x 90	75	130.60
A-769	140 x 90	40	218.90
A-770	160 x 110	25	320.10

### PVC SOLVENT CEMENT

Cat No.	ML	M.R.P.
EWS-45	250	188.00

## 3 meters



### 2.5 KG

Cat No.	Size (mm)	M.R.P.
A-1A	20	-
A-2A	25	-
A-3A	32	-
A-4A	40	-
A-5A	50	-
A-6A	63	-
A-7A	75	-
A-8A	90	480.00
A-9A	110	710.00
A-10A	125	895.00
A-11A	140	1120.00
A-12A	160	1480.00
A-13A	180	1870.00
A-14A	200	2320.00
A-15A	225	-
A-16A	250	-
A-17A	280	-
A-18A	315	-
A-19A	355	-
A-20A	400	-

### 4 KG

Cat No.	Size (mm)	M.R.P.
A-21A	20	-
A-22A	25	-
A-23A	32	-
A-24A	40	-
A-25A	50	-
A-26A	63	450.00
A-27A	75	648.00
A-28A	90	843.00
A-29A	110	1099.00
A-30A	125	1675.00
A-31A	140	2170.00
A-32A	160	2493.00
A-33A	180	2990.00
A-34A	200	3640.00
A-35A	225	-
A-36A	250	-
A-37A	280	-
A-38A	315	-
A-39A	355	-
A-40A	400	-

### 6 KG

Cat No.	Size (mm)	M.R.P.
A-41A	20	-
A-42A	25	-
A-43A	32	-
A-44A	40	259.00
A-45A	50	390.00
A-46A	63	558.00
A-47A	75	839.00
A-48A	90	1119.00
A-49A	110	1624.00
A-50A	125	2248.00
A-51A	140	2948.00
A-52A	160	3248.00
A-53A	180	4290.00
A-54A	200	5368.00
A-55A	225	-
A-56A	250	-
A-57A	280	-
A-58A	315	-
A-59A	355	-
A-60A	400	-

### 10 KG

Cat No.	Size (mm)	M.R.P.
A-81A	20	89.00
A-82A	25	137.00
A-83A	32	223.00
A-84A	40	336.00
A-85A	50	495.00
A-86A	63	848.00
A-87A	75	1198.00
A-88A	90	1716.00
A-89A	110	2568.00
A-90A	125	3316.00
A-91A	140	4148.00
A-92A	160	5388.00
A-93A	180	6844.00
A-94A	200	8469.00
A-95A	225	-
A-96A	250	-
A-97A	280	-
A-98A	315	-
A-99A	355	-
A-100A	400	-

## 5 meters



### 2.5 KG

Cat No.	Size (mm)	M.R.P.
A-1B	20	-
A-2B	25	-
A-3B	32	-
A-4B	40	-
A-5B	50	-
A-6B	63	-
A-7B	75	-
A-8B	90	<b>800.00</b>
A-9B	110	<b>1183.00</b>
A-10B	125	<b>1492.00</b>
A-11B	140	<b>1867.00</b>
A-12B	160	<b>2467.00</b>
A-13B	180	<b>3117.00</b>
A-14B	200	<b>3867.00</b>
A-15B	225	-
A-16B	250	-
A-17B	280	-
A-18B	315	-
A-19B	355	-
A-20B	400	-

### 4 KG

Cat No.	Size (mm)	M.R.P.
A-21B	20	-
A-22B	25	-
A-23B	32	-
A-24B	40	-
A-25B	50	-
A-26B	63	<b>749.00</b>
A-27B	75	<b>1080.00</b>
A-28B	90	<b>1405.00</b>
A-29B	110	<b>1832.00</b>
A-30B	125	<b>2791.00</b>
A-31B	140	<b>3617.00</b>
A-32B	160	<b>4155.00</b>
A-33B	180	<b>4983.00</b>
A-34B	200	<b>6067.00</b>
A-35B	225	-
A-36B	250	-
A-37B	280	-
A-38B	315	-
A-39B	355	-
A-40B	400	-

### 6 KG

Cat No.	Size (mm)	M.R.P.
A-41B	20	-
A-42B	25	-
A-43B	32	-
A-44B	40	<b>432.00</b>
A-45B	50	<b>650.00</b>
A-46B	63	<b>930.00</b>
A-47B	75	<b>1398.00</b>
A-48B	90	<b>1865.00</b>
A-49B	110	<b>2707.00</b>
A-50B	125	<b>3747.00</b>
A-51B	140	<b>4913.00</b>
A-52B	160	<b>5413.00</b>
A-53B	180	<b>7150.00</b>
A-54B	200	<b>8947.00</b>
A-55B	225	-
A-56B	250	-
A-57B	280	-
A-58B	315	-
A-59B	355	-
A-60B	400	-

### 10 KG

Cat No.	Size (mm)	M.R.P.
A-81B	20	<b>148.00</b>
A-82B	25	<b>228.00</b>
A-83B	32	<b>372.00</b>
A-84B	40	<b>560.00</b>
A-85B	50	<b>825.00</b>
A-86B	63	<b>1413.00</b>
A-87B	75	<b>1997.00</b>
A-88B	90	<b>2860.00</b>
A-89B	110	<b>4280.00</b>
A-90B	125	<b>5527.00</b>
A-91B	140	<b>6913.00</b>
A-92B	160	<b>8980.00</b>
A-93B	180	<b>11407.00</b>
A-94B	200	<b>14115.00</b>
A-95B	225	-
A-96B	250	-
A-97B	280	-
A-98B	315	-
A-99B	355	-
A-100B	400	-

## 6 meters

### 2.5 KG

Cat No.	Size (mm)	M.R.P.
A-1C	20	-
A-2C	25	-
A-3C	32	-
A-4C	40	-
A-5C	50	-
A-6C	63	-
A-7C	75	-
A-8C	90	<b>960.00</b>
A-9C	110	<b>1420.00</b>
A-10C	125	<b>1790.00</b>
A-11C	140	<b>2240.00</b>
A-12C	160	<b>2960.00</b>
A-13C	180	<b>3740.00</b>
A-14C	200	<b>4640.00</b>
A-15C	225	-
A-16C	250	-
A-17C	280	-
A-18C	315	-
A-19C	355	-
A-20C	400	-

### 4 KG

Cat No.	Size (mm)	M.R.P.
A-21C	20	-
A-22C	25	-
A-23C	32	-
A-24C	40	-
A-25C	50	-
A-26C	63	<b>899.00</b>
A-27C	75	<b>1296.00</b>
A-28C	90	<b>1686.00</b>
A-29C	110	<b>2198.00</b>
A-30C	125	<b>3349.00</b>
A-31C	140	<b>4340.00</b>
A-32C	160	<b>4986.00</b>
A-33C	180	<b>5980.00</b>
A-34C	200	<b>7280.00</b>
A-35C	225	-
A-36C	250	-
A-37C	280	-
A-38C	315	-
A-39C	355	-
A-40C	400	-

### 6 KG

Cat No.	Size (mm)	M.R.P.
A-41C	20	-
A-42C	25	-
A-43C	32	-
A-44C	40	<b>518.00</b>
A-45C	50	<b>780.00</b>
A-46C	63	<b>1116.00</b>
A-47C	75	<b>1678.00</b>
A-48C	90	<b>2238.00</b>
A-49C	110	<b>3248.00</b>
A-50C	125	<b>4496.00</b>
A-51C	140	<b>5896.00</b>
A-52C	160	<b>6496.00</b>
A-53C	180	<b>8580.00</b>
A-54C	200	<b>10736.00</b>
A-55C	225	-
A-56C	250	-
A-57C	280	-
A-58C	315	-
A-59C	355	-
A-60C	400	-

### 10 KG

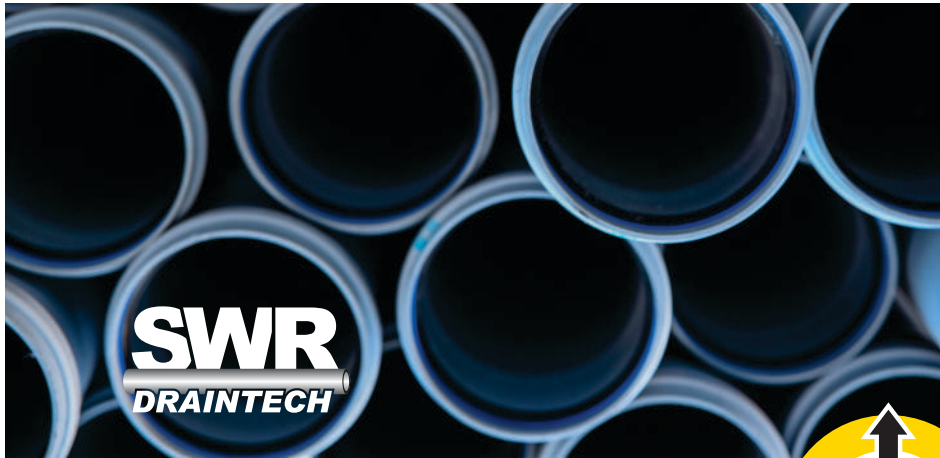
Cat No.	Size (mm)	M.R.P.
A-81C	20	<b>178.00</b>
A-82C	25	<b>274.00</b>
A-83C	32	<b>446.00</b>
A-84C	40	<b>672.00</b>
A-85C	50	<b>990.00</b>
A-86C	63	<b>1696.00</b>
A-87C	75	<b>2396.00</b>
A-88C	90	<b>3432.00</b>
A-89C	110	<b>5136.00</b>
A-90C	125	<b>6632.00</b>
A-91C	140	<b>8296.00</b>
A-92C	160	<b>10776.00</b>
A-93C	180	<b>13688.00</b>
A-94C	200	<b>16938.00</b>
A-95C	225	-
A-96C	250	-
A-97C	280	-
A-98C	315	-
A-99C	355	-
A-100C	400	-

**SWR**  
**DRAINTeCH**



*Soil, Waste or Rain*  
ONE PIPING SOLUTION







**INTRODUCING PRAYAG SWR PIPES** Manufactured with unmatched precision on state-of-the-art extruders, these pipes offer extremely high dimensional accuracy and supreme toughness along with ease for installation. The top of the line raw material ensures excellent performance and long service life, even under extreme conditions.

**QUALITY PRODUCT FROM THE HOUSE OF PRAYAG**

These SWR pipes are brought to you from the house of PRAYAG, maker of quality products like C.P & PTMT Sanitaryware, Stainless Steel Sinks, CPVC & UPVC plumbing systems and Hardware.

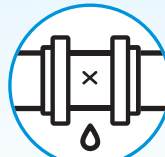
For Pipes	For Fittings
IS 13592:2013	IS 14735:1999
	
CM/L-8400118111	CM/L-8400118010



Thermal variation yellow secure mechanism

**Prayag SWR Draintech Features**

- Dimensional Accuracy
- 100% leak proof joints
- Push-fit installation
- Superior water flow rate
- High pressure bearing capability
- UV resistance
- Ease of use
- Cost saver as it requires no solvent for joints



100% Leak Proof Joints



Economical & Cost Effective



Low Weight, Easy Handling



Strong & Durable



UV Resistant



Excellent Corrosion Resistance



High Chemical Resistance



Complete Drainage Solutions for Commercial, Residential and Industrial Applications





**BEND 45°**

Item Code	Size mm	Size inch	Pkg box	M.R.P	M.R.P Per box
5710	75	2 ½	75	84.00	6300.00
5910	90	3	45	114.00	5130.00
5110	110	4	25	164.00	4100.00
5610	160	6	8	398.00	3184.00



**BEND 87.5°  
WITH DOOR**

Item Code	Size mm	Size inch	Pkg box	M.R.P	M.R.P Per box
5712	75	2 ½	50	104.00	5200.00
5912	90	3	30	138.00	4140.00
5112	110	4	18	206.00	3708.00
5612	160	6	06	496.00	2976.00



**BEND 87.5°  
WITH RH DOOR**

Item Code	Size mm	Size inch	Pkg box	M.R.P	M.R.P Per box
5715	75	2 ½	45	114.00	5130.00
5115	110	4	15	228.00	3420.00



**BEND 87.5°**

Item Code	Size mm	Size inch	Pkg box	M.R.P	M.R.P Per box
5711	75	2 ½	60	97.00	5820.00
5911	90	3	35	136.00	4760.00
5111	110	4	20	212.00	4240.00
5611	160	6	8	516.00	4128.00



**BEND 87.5°  
WITH LH DOOR**

Item Code	Size mm	Size inch	Pkg box	M.R.P	M.R.P Per box
5714	75	2 ½	45	108.00	4860.00
5114	110	4	15	224.00	3360.00



**REPAIR  
COUPLER**

Item Code	Size mm	Size inch	Pkg box	M.R.P	M.R.P Per box
5722	75	2 ½	90	69.40	6246.00
5922	90	3	50	98.00	4900.00
5122	110	4	36	142.00	5112.00
5622	160	6	12	318.00	3816.00



**COUPLER**

Item Code	Size mm	Size inch	Pkg box	M.R.P	M.R.P Per box
5721	75	2 ½	90	68.00	6120.00
5921	90	3	50	98.00	4900.00
5121	110	4	36	142.00	5112.00
5621	160	6	12	328.00	3936.00



**CROSS TEE**

Item Code	Size mm	Size inch	Pkg box	M.R.P	M.R.P Per box
5731	75	2 ½	25	168.00	4200.00
5131	110	4	8	334.00	2672.00

**CROSS TEE  
WITH DOOR**

Item Code	Size mm	Size inch	Pkg box	M.R.P	M.R.P Per box
5732	75	2 ½	20	174.00	3480.00
5132	110	4	7	348.00	2436.00





SINGLE TEE  
WITH DOOR

Item Code	Size mm	Size inch	Pkg box	M.R.P	M.R.P Per box
5734	75	2 ½	30	141.70	4251.00
5934	90	3	20	209.80	4196.00
5134	110	4	10	274.10	2741.00
5634	160	6	8	696.00	5568.00



SINGLE Y  
WITH DOOR

Item Code	Size mm	Size inch	Pkg box	M.R.P	M.R.P Per box
5742	75	2 ½	30	172.00	5160.00
5942	90	3	25	242.00	4840.00
5142	110	4	10	368.00	3680.00
5642	160	6	5	1048.00	5240.00



SINGLE TEE

Item Code	Size mm	Size inch	Pkg box	M.R.P	M.R.P Per box
5733	75	2 ½	40	134.30	5372.00
5933	90	3	20	188.00	3760.00
5133	110	4	15	268.60	4029.00
5633	160	6	4	678.00	2712.00



REVERSE Y  
WITH DOOR

Item Code	Size mm	Size inch	Pkg box	M.R.P	M.R.P Per box
5746	75	2½	25	163.70	4092.50
5146	110	4	10	277.80	2778.00



REDUCING  
TEE

Item Code	Size mm	Size inch	Pkg box	M.R.P	M.R.P Per box
5151	75 x 110	2 ½ x 4	16	242.00	3872.00
5951	90 x 75	3 x 2 ½	10	188.00	1880.00
5651	110 x 160	4 x 6	6	638.00	3828.00
5751	160 x 75	6 x 2 ½	4	588.00	2352.00



REDUCER Y  
WITH DOOR

Item Code	Size mm	Size inch	Pkg box	M.R.P	M.R.P Per box
5156	75 x 110	2½ x 4	12	288.00	3456.00



REDUCING TEE  
WITH DOOR

Item Code	Size mm	Size inch	Pkg box	M.R.P	M.R.P Per box
5152	75 x 110	2 ½ x 4	14	258.00	3612.00
5952	90 x 75	3 x 2 ½	10	218.00	2180.00
5652	110 x 160	4 x 6	4	668.00	2672.00
5752	160 x 75	6 x 2 ½	4	628.00	2512.00



DOOR CAP

Item Code	Size mm	Size inch	Pkg box	M.R.P	M.R.P Per box
5764	75	2 ½	175	22.20	3885.00
5964	90	3	150	32.80	4920.00
5164	110	4	150	44.80	6720.00
5664	160	6	50	78.00	3900.00



DOUBLE  
Y WITH DOOR

Item Code	Size mm	Size inch	Pkg box	M.R.P	M.R.P Per box
5745	75	2½	18	224.00	4032.00
5145	110	4	10	478.00	4780.00



REDUCER Y

Item Code	Size mm	Size inch	Pkg box	M.R.P	M.R.P Per box
5155	75 x 110	2½ x 4	15	264.90	3973.50



CLEANING PIPE

Item Code	Size mm	Size inch	Pkg box	M.R.P	M.R.P Per box
5758	75	2½	50	114.00	5700.00
5158	110	4	15	234.00	3510.00



DOUBLE Y

Item Code	Size mm	Size inch	Pkg box	M.R.P	M.R.P Per box
5744	75	2½	40	207.90	8316.00
5144	110	4	7	448.90	3142.30



SINGLE Y

Item Code	Size mm	Size inch	Pkg box	M.R.P	M.R.P Per box
5741	75	2 ½	32	163.70	5238.40
5941	90	3	20	234.00	4680.00
5141	110	4	10	338.00	3380.00
5641	160	6	5	999.10	4995.50



REDUCER  
COUPLER

Item Code	Size mm	Size inch	Pkg box	M.R.P	M.R.P Per box
5157	75 x 110	2 ½ x 4	60	116.00	6960.00
5957	90 x 110	3/4	40	126.00	5040.00
5657	110 x 160	4/6	24	278.00	6672.00



REVERSE Y 45°

Item Code	Size mm	Size inch	Pkg box	M.R.P	M.R.P Per box
5743	75	2½	32	178.00	5696.00
5143	110	4	10	438.00	4380.00



VENT COWL

Item Code	Size mm	Size inch	Pkg box	M.R.P	M.R.P Per box
4761	63	-	250	16.20	4050.00
5761	75	2 ½	266	20.60	5479.60
5961	90	3	156	33.80	5272.80
5161	110	4	108	40.40	4363.20
5661	160	6	40	91.00	3640.00



PIPE CLIP

Item Code	Size mm	Size inch	Pkg box	M.R.P	M.R.P Per box
5762	75	2 ½	200	21.80	4360.00
5962	90	3	160	22.40	3584.00
5162	110	4	150	30.40	4560.00
5662	160	6	80	62.40	4992.00



YELLOW SEAL 'O' RING

Item Code	Size mm	Size inch	Pkg box	M.R.P	M.R.P Per box
5102	75	2½	300	10.50	3150.00
5103	90	3	250	15.10	3775.00
5104	110	4	200	23.40	4680.00
5105	160	6	150	40.90	6135.00



Q TRAP

Item Code	Size mm	Size inch	Pkg box	M.R.P	M.R.P Per box
5772	110 x 125	4 x 4½	10	466.00	4660.00
5172	110 x 110	4 x 4	10	424.00	4240.00



P TRAP

Item Code	Size mm	Size inch	Pkg box	M.R.P	M.R.P Per box
5771	110 x 125	4 x 4½	10	428.00	4280.00
5171	110 x 110	4 x 4	10	378.00	3780.00



NAHANI TRAP & JALI

Item Code	Size mm	Size inch	Pkg box	M.R.P	M.R.P Per box
5763	75	2½	36	196.00	7056.00
5963	90	3	28	244.00	6832.00
5163	110	4	24	214.00	5136.00



S TRAP

Item Code	Size mm	Size inch	Pkg box	M.R.P	M.R.P Per box
5773	110 x 125	4 x 4½	8	532.00	4256.00
5173	110 x 110	4 x 4	10	488.00	4880.00



NAHANI TRAP WITHOUT JALI

Item Code	Size mm	Size inch	Pkg box	M.R.P	M.R.P Per box
5763-W	75	2½	36	176.00	6336.00
5963-W	90	3	28	218.00	6104.00
5163-W	110	4	24	192.00	4608.00



ROUND JALI

Item Code	Size mm	Size inch	Pkg box	M.R.P	M.R.P Per box
5765	110	4	300	22.40	6720.00



FLOOR TRAP

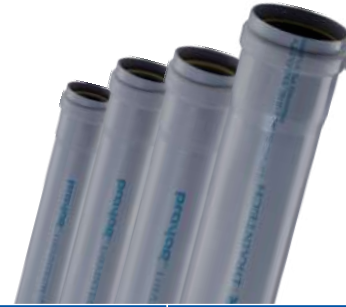
Item Code	Size mm	Size inch	Pkg box	M.R.P	M.R.P Per box
5791	110 x 75	4 x 2½	25	136.00	3400.00



RUBBER LUBRICANT

Item Code	Size in GM	PACKING BOX	M.R.P	M.R.P Per box
RL-2	100	100	42.00	4200.00
RL-3	250	40	90.00	3600.00
RL-4	500	20	168.00	3360.00

## SWR PIPE TYPE A



Length	Socket	75 mm		90 mm		110 mm		160 mm	
		Item Code	M.R.P	Item Code	M.R.P	Item Code	M.R.P	Item Code	M.R.P
3 METER	S/S	PW 71	610.00	PW 91	668.00	PW 11	970.00	PW 61	1958.00
3 METER	D/S	PW 72	630.00	PW 92	692.00	PW 12	998.00	PW 62	1998.00
6 METER	S/S	PW 73	1220.00	PW 93	1336.00	PW 13	1940.00	PW 63	3916.00
6 METER	D/S	PW 74	1240.00	PW 94	1360.00	PW 14	1970.00	PW 64	3956.00
2 FEET	D/S	PW 75	148.00	PW 95	168.00	PW 15	238.00	PW 65	448.00
3 FEET	D/S	PW 76	218.00	PW 96	248.00	PW 16	348.00	PW 66	678.00
4 FEET	D/S	PW 77	312.00	PW 97	332.00	PW 17	468.00	PW 67	898.00
6 FEET	D/S	PW 78	444.00	PW 98	496.00	PW 18	712.00	PW 68	1328.00
6 FEET	S/S	PW 79	464.00	PW 99	520.00	PW 19	742.00	PW 69	1368.00
4 FEET	S/S	PW 80	332.00	PW 100	356.00	PW 20	498.00	PW 70	938.00

## SWR PIPE TYPE B



Length	Socket	75 mm		90 mm		110 mm		160 mm	
		Item Code	M.R.P	Item Code	M.R.P	Item Code	M.R.P	Item Code	M.R.P
3 METER	S/S	PW 31	918.00	PW 81	1122.00	PW 21	1333.00	PW 51	2358.00
3 METER	D/S	PW 32	938.00	PW 82	1146.00	PW 22	1363.00	PW 52	2398.00
6 METER	S/S	PW 33	1836.00	PW 83	2244.00	PW 23	2666.00	PW 53	4716.00
6 METER	D/S	PW 34	1856.00	PW 84	2268.00	PW 24	2696.00	PW 54	4756.00
2 FEET	D/S	PW 35	212.00	PW 85	258.00	PW 25	306.00	PW 55	536.00
3 FEET	D/S	PW 36	318.00	PW 86	388.00	PW 26	458.00	PW 56	796.00
4 FEET	D/S	PW 37	424.00	PW 87	516.00	PW 27	612.00	PW 57	1068.00
6 FEET	D/S	PW 38	636.00	PW 88	774.00	PW 28	916.00	PW 58	1598.00
6 FEET	S/S	PW 39	656.00	PW 89	798.00	PW 29	946.00	PW 59	1538.00
4 FEET	S/S	PW 40	444.00	PW 90	540.00	PW 30	642.00	PW 60	1108.00

# SELFIT

## SERIES

Prayaag presents Selfit SWR pipes, a self socketing pipes for easy installation and use. These pipes are made under strict quality parameters on highly advanced automatic machines, that provides them unmatched accuracy and precision. These pipes form a permanent water tight joint to avoid leakage even after long usage. Moreover these pipes are lead-free to avoid contamination.



### BEND 45°

Item Code	Size mm	Pkg box	M.R.P	M.R.P Per box
5710S	75	90	<b>70.80</b>	<b>6372.00</b>
5910S	90	50	<b>95.60</b>	<b>4780.00</b>
5110S	110	30	<b>130.60</b>	<b>3918.00</b>
5610S	160	10	<b>336.00</b>	<b>3360.00</b>



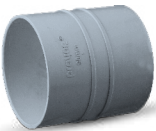
### BEND 87.5°

Item Code	Size mm	Pkg box	M.R.P	M.R.P Per box
5711S	75	70	<b>82.70</b>	<b>5789.00</b>
5911S	90	40	<b>112.20</b>	<b>4488.00</b>
5111S	110	25	<b>164.60</b>	<b>4115.00</b>
5611S	160	8	<b>412.10</b>	<b>3296.80</b>



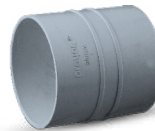
### BEND 87.5° WITH DOOR

Item Code	Size mm	Pkg box	M.R.P	M.R.P Per box
5712S	75	50	<b>89.00</b>	<b>4450.00</b>
5912S	90	30	<b>117.70</b>	<b>3531.00</b>
5112S	110	20	<b>180.30</b>	<b>3606.00</b>
5612S	160	4	<b>437.90</b>	<b>1751.60</b>



### COUPLER

Item Code	Size mm	Pkg box	M.R.P	M.R.P Per box
5721S	75	140	<b>50.00</b>	<b>7000.00</b>
5921S	90	60	<b>70.20</b>	<b>4212.00</b>
5121S	110	50	<b>88.80</b>	<b>4440.00</b>
5621S	160	20	<b>210.20</b>	<b>4204.00</b>



### REPAIR COUPLER

Item Code	Size mm	Pkg box	M.R.P	M.R.P Per box
5722S	75	140	<b>52.00</b>	<b>7280.00</b>
75922S	90	60	<b>72.00</b>	<b>4320.00</b>
5122S	110	50	<b>94.00</b>	<b>4700.00</b>
5622S	160	20	<b>198.00</b>	<b>3960.00</b>



### TEE

Item Code	Size mm	Pkg box	M.R.P	M.R.P Per box
5733S	75	45	<b>128.00</b>	<b>5760.00</b>
5933S	90	15	<b>168.00</b>	<b>2520.00</b>
5133S	110	15	<b>232.00</b>	<b>3480.00</b>
5633S	160	5	<b>588.80</b>	<b>2944.00</b>



### TEE WITH DOOR

Item Code	Size mm	Pkg box	M.R.P	M.R.P Per box
5734S	75	40	<b>138.00</b>	<b>5520.00</b>
5934S	90	24	<b>178.00</b>	<b>4272.00</b>
5134S	110	15	<b>248.00</b>	<b>3720.00</b>
5634S	160	5	<b>585.00</b>	<b>2925.00</b>



### SINGLE Y

Item Code	Size mm	Pkg box	M.R.P	M.R.P Per box
5741S	75	35	<b>158.00</b>	<b>5530.00</b>
5941S	90	20	<b>208.00</b>	<b>4160.00</b>
5141S	110	12	<b>298.00</b>	<b>3576.00</b>
5641S	160	4	<b>772.00</b>	<b>3088.00</b>



### SINGLE Y WITH DOOR

Item Code	Size mm	Pkg box	M.R.P	M.R.P Per box
5742S	75	30	<b>162.00</b>	<b>4860.00</b>
5942S	90	20	<b>218.00</b>	<b>4360.00</b>
5142S	110	12	<b>318.00</b>	<b>3816.00</b>
5642S	160	3	<b>778.00</b>	<b>2334.00</b>

## SWR PIPE SELF FIT TYPE A



Length	Socket	75 mm		90 mm		110 mm		160 mm	
		Item Code	M.R.P	Item Code	M.R.P	Item Code	M.R.P	Item Code	M.R.P
3 METER	S/S	PW 71S	598.00	PW 91S	658.00	PW 11S	966.00	PW 61S	1928.00
3 METER	D/S	PW 72S	608.00	PW 92S	668.00	PW 12S	978.00	PW 62S	1942.00
6 METER	S/S	PW 73S	1186.00	PW 93S	1316.00	PW 13S	1930.00	PW 63S	3856.00
6 METER	D/S	PW 74S	1196.00	PW 94S	1326.00	PW 14S	1942.00	PW 64S	3870.00
2 FEET	D/S	PW 75S	138.00	PW 95S	158.00	PW 15S	226.00	PW 65S	432.00
3 FEET	D/S	PW 76S	208.00	PW 96S	238.00	PW 16S	326.00	PW 66S	648.00
4 FEET	D/S	PW 77S	298.00	PW 97S	318.00	PW 17S	446.00	PW 67S	848.00
6 FEET	D/S	PW 78S	432.00	PW 98S	478.00	PW 18S	688.00	PW 68S	1296.00
6 FEET	S/S	PW 79S	428.00	PW 99S	470.00	PW 19S	680.00	PW 69S	1284.00
4 FEET	S/S	PW 80S	294.00	PW 100S	312.00	PW 20S	438.00	PW 70S	836.00

## SWR PIPE SELF FIT TYPE B



Length	Socket	75 mm		90 mm		110 mm		160 mm	
		Item Code	M.R.P	Item Code	M.R.P	Item Code	M.R.P	Item Code	M.R.P
3 METER	S/S	PW 31S	896.00	PW 81S	1098.00	PW 21S	1298.00	PW 51S	2284.00
3 METER	D/S	PW 32S	906.00	PW 82S	1108.00	PW 22S	1312.00	PW 52S	2298.00
6 METER	S/S	PW 33S	1792.00	PW 83S	2196.00	PW 23S	2596.00	PW 53S	4568.00
6 METER	D/S	PW 34S	1804.00	PW 84S	2208.00	PW 24S	2610.00	PW 54S	4584.00
2 FEET	D/S	PW 35S	198.00	PW 85S	248.00	PW 25S	288.00	PW 55S	496.00
3 FEET	D/S	PW 36S	298.00	PW 86S	368.00	PW 26S	438.00	PW 56S	758.00
4 FEET	D/S	PW 37S	398.00	PW 87S	492.00	PW 27S	588.00	PW 57S	992.00
6 FEET	D/S	PW 38S	598.00	PW 88S	742.00	PW 28S	878.00	PW 58S	1534.00
6 FEET	S/S	PW 39S	590.00	PW 89S	734.00	PW 29S	868.00	PW 59S	1524.00
4 FEET	S/S	PW 40S	390.00	PW 90S	484.00	PW 30S	580.00	PW 60S	982.00

# prayag® WATER TANKS

## INTRODUCING PRAYAG STORAGE TANKS

Prayag India has now added another feather in its cap by introducing Prayag PVC water Storage Tanks. Prayag manufactures a wide range of water storage tanks through the most trusted and reliable Rotational Molded technology with virgin food grade material that provides the highest standard of safety, durability and high-quality finish to these tanks to last them for years.

These are multi-layered tanks available in 3 to 5 layers construction that not only ensures safe and cool water but are also designed to provide a host of unmatched advantages over ordinary water tanks.

Prayag's products are designed keeping in mind the requirements and challenges of its customers and hence the plethora of features in Prayag PVC tanks. Additionally loaded with some exemplary features like anti-microbial protection layer, threaded lid, air vent and food grade polymer, Prayag water tanks accompany a good range of storage capacities of upto 5000 Liters and hues to match your exterior. We create only the best for you and our PVC water tanks prove it!

Choose from  
a wide range of  
exciting colours of  
your choice

*Ajay Devgn*  
Ajay Devgn

**4**  
LAYER  
PUFF TANK

**3**  
LAYER  
TANK



**MULTI-LAYERED**

These tanks are manufactured with multiple layers to provide maximum protection, safety and durability. Each layer provides different set of benefits to ensure uninterrupted safe water to your taps.

**8%  
extra  
CAPACITY**



**LAYER 1 - Outer Layer White or Coloured**

Highly UV resistant layer which prevents the tank from external weathering. The specially engineered polymer prevents the tank from cracking and wearing due to different temperature conditions. This layer is available in various colours.

**LAYER 2 - Middle Black layer**

Black colour UV sun-shield layer which protects water from harmful UV rays.

**Layer 3 - Middle Off-White layer\***

Thermal insulated layer that maintains water temperature under any extreme weather condition. Secondly, it adds to the strength of the tank body.

**Layer 4 - Inner White layer**

Food grade material layer, which eliminates bacteria by 99.9% and keeps stored water safe and hygienic to drink.



\*3 Layer Water Tank does not come with this layer

**PRAYAG TANK ADVANTAGE**



**AIR VENTILATION**

Unique feature allows fresh air to enter the tank to keep water free from bad odour or getting stale



**EXTRA RIBS**

Designed with more ribs to enhance its strength and durability under water pressure



**UV PROTECTION**

Outer layer is enforced with special additive UV compound to improve tank's resistance to degradation, cracking when it is exposed to direct sunlight



**FOOD GRADE MATERIAL**

Made with food grade polymer to store water absolutely safe for drinking or consumption



**THREADED LID**

Keeps the LID firmly fixed on its mouth that prevents breakage or ensures hygienic water free from dust and other contaminations



**HEAT RETARDANT**

Special heat retardant material to maintain the water temperature



**BREAK RESISTANT**

Multi-layered engineered polymer to provide extra toughness and strength to the tank body



**8% EXTRA CAPACITY**

The unique design allows 8% extra storage capacity, making it a space saver and cost effective tank



prayag  
**Zeta**  
**XHD**  
TANKS



Available Colours



**Features**

- Extra Heavy Duty (XHD)
- UV stabilized
- Roto-moulded
- Virgin plastic
- FDA approved
- 4 Layered Body
- Threaded Lid
- Air Ventilation Lid
- 8% Extra capacity



**SPECIFICATIONS**

CAT NO.	Capacity (Ltrs.)	Overall Diameter (mm)	Overall Height (mm)	Diameter of Manhole (mm)	M.R.P. Per PCS.
WT-4LH-05	500	850	1000	420	9750.00
WT-4LC-05					10750.00
WT-4LH-07	750	1000	1120	420	14625.00
WT-4LC-07					16125.00
WT-4LH-10	1000	1090	1280	420	19500.00
WT-4LC-10					21500.00
WT-4LH-15	1500	1210	1460	420	29250.00
WT-4LC-15					32250.00
WT-4LH-20	2000	1350	1530	420	39000.00
WT-4LC-20					43000.00
WT-4LH-30	3000	1580	1880	480	58500.00
WT-4LC-30					64500.00
WT-4LH-50	5000	1900	2090	480	97500.00
WT-4LC-50					107500.00

prayag  
**Zen**  
**XHD**  
TANKS



Available Colours



**Features**

- Extra Heavy Duty (XHD)
- UV stabilized
- Roto-moulded
- Virgin plastic
- FDA approved
- 3 Layered Body
- Threaded Lid
- Air Ventilation Lid
- 8% Extra capacity



**SPECIFICATIONS**

CAT NO.	Capacity (Ltrs.)	Overall Diameter (mm)	Overall Height (mm)	Diameter of Manhole (mm)	M.R.P. Per PCS.
WT-3LH-05	500	850	1000	420	8250.00
WT-3LC-05					8750.00
WT-3LH-07	750	1000	1120	420	12375.00
WT-3LC-07					13125.00
WT-3LH-10	1000	1090	1280	420	16500.00
WT-3LC-10					17500.00
WT-3LH-15	1500	1210	1460	420	24750.00
WT-3LC-15					26250.00
WT-3LH-20	2000	1350	1530	420	33000.00
WT-3LC-20					35000.00
WT-3LH-30	3000	1580	1880	480	49500.00
WT-3LC-30					52500.00
WT-3LH-50	5000	1900	2090	480	82500.00
WT-3LC-50					87500.00

prayag  
**ikon**



Available Colour



### Features

- Extra Heavy Duty (XHD)
- UV stabilized
- Roto-moulded
- Virgin plastic
- FDA approved
- 4 Layered Body
- Threaded Lid
- Air Ventilation Lid
- 8% Extra capacity



### SPECIFICATIONS

CAT NO.	Capacity (Ltrs.)	Overall Diameter (mm)	Overall Height (mm)	Diameter of Manhole (mm)	M.R.P. Per PCS.
WT-4LL-05	500	850	1000	420	8750.00
WT-4LL-07	750	1000	1120	420	13125.00
WT-4LL-10	1000	1090	1280	420	17500.00
WT-4LL-15	1500	1210	1460	420	26250.00
WT-4LL-20	2000	1350	1530	420	35000.00
WT-4LL-30	3000	1580	1880	480	52500.00
WT-4LL-50	5000	1900	2090	480	87500.00



Available Colour



### Features

- Extra Heavy Duty (XHD)
- UV stabilized
- Roto-moulded
- Virgin plastic
- FDA approved
- 3 Layered Body
- Threaded Lid
- Air Ventilation Lid
- 8% Extra capacity



prayag  
**Kea**

### SPECIFICATIONS

CAT NO.	Capacity (Ltrs.)	Overall Diameter (mm)	Overall Height (mm)	Diameter of Manhole (mm)	M.R.P. Per PCS.
WT-3LL-05	500	850	1000	420	7250.00
WT-3LL-07	750	1000	1120	420	10875.00
WT-3LL-10	1000	1090	1280	420	14500.00
WT-3LL-15	1500	1210	1460	420	21750.00
WT-3LL-20	2000	1350	1530	420	29000.00
WT-3LL-30	3000	1580	1880	480	43500.00
WT-3LL-50	5000	1900	2090	480	72500.00

# praya<sup>®</sup>g



#### Terms & Conditions

1. Maximum Retail Price (M.R.P.) is inclusive of all taxes
2. The company reserves the right to change product specifications and features without prior notice
3. This price list supercedes all previous price lists
4. All disputes are subject to Delhi's Jurisdiction

SCAN ME



[www.prayagindia.com](http://www.prayagindia.com)



Factory tour videos

[f](#) | [t](#) | [i](#) /prayaglife

#### PRAYAG POLYMERS PVT. LTD.

**Corp. Office:** 2483-84, Prayag Infinity House, Nalwa Street, Pahar Ganj, New Delhi-110055

**Plant-1:** A-1129, Phase-III, RIICO Industrial Area, Bhiwadi Alwar, Rajasthan-301019

**Plant-2:** E-167, E-167A, E-168, E-263, E-264 RIICO Industrial Area, Kaharani, Bhiwadi Extn., Rajasthan-301019

**Plant-3:** Patakola, P. O. Jagadalla, Dist. Bankura West Bengal-722146

**Plant-4:** F-61, Industrial Area, Ram Nagar, Chandauli, Varanasi, Uttar Pradesh-221110

**TOLL FREE NO.: 1800 257 0304** | E-mail : [customercare@prayagindia.net](mailto:customercare@prayagindia.net)